



FULL HEIGHT GROUNDING KIT ASSEMBLY  
P/N 100924

## INSTALLATION OF LIGHTNING PROTECTION KIT

1. Unpack the kit from its carton and check its contents against the parts list and drawing B100924 to be sure you have all the pieces.
2. Assemble the items that belong to the upper part of the tower. Mount the I" pipe into the cross coupling, (items 6 and 7). Loop the copper cable onto itself and insert it into the bottom of the point bracket (item 4). Slide the bracket and cable onto the end of the I" pipe and tighten the screws securely. Screw the lightning point (item 3) onto the top of the point' bracket and tighten it securely. This assembly is now ready for mounting at the top of the tower. (See detail A.)
3. Mount the assembled parts onto the vertical pipe at the top of the tower roughly 6" below the top. See drawing B100924 for proper orientation with relation to the wind sensors. Mount the wind sensors above the cross for the lightning kit. Check the rotation of the cups and vane to see that the point does not interfere with their operation.
4. Strap the copper cable to the tower approximately every 2 or 3 feet down the length of the tower. If the tower is to be tilted down for servicing, it is recommended that copper cable be run down one of the pivoting legs. It is advisable that the copper cable be run down the opposite side of the tower from the wind sensor cable to reduce the possibility of transients going into the sensors and signal conditioning equipment in the event of a strike.
5. Drive the ground rod (item I) into the ground until all but about 3" is in the ground. Cut off any excess copper cable and connect the cable to the ground rod with the clamp provided (item 2). The system is now complete.



FULL HEIGHT GROUNDING KIT ASSEMBLY  
P/N 100924  
PARTS LIST

FULL HEIGHT GROUNDING KIT  
P/N 100924 Rev H  
PARTS LIST  
Sheet 2 of 2

ITEM	SYM.NO	QTY	PART NO.	DESCRIPTION
------	--------	-----	----------	-------------

Notes: CABLE USED ON THIS ASSEMBLY IS P/N G4, SEE CONFIGURED PART FOR CABLE LENGTH.

FOR CALCULATING LENGTH OF CABLE REQUIRED FOR FULL HEIGHT GROUNDING KIT USE THE FOLLOWING:  
TOWER HEIGHT + 10 FEET = TOTAL CABLE REQUIRED  
EXAMPLE: 100924-G0-45 45 FEET IS TOTAL CABLE LENGTH REQUIRED

ITEM 5 IS NOT USED

1		1.0	139	ROD, GROUND
2		1.0	51	CLAMP, GROUND ROD
3		1.0	106B	POINT
4		1.0	181	BRACKET, RAILING POINT
6		0.0	100924G	SEE G LIST
7		1.0	501040	HORIZONTAL SUPPORT

1-1/4 INCH MAST MOUNT  
P/N 100924G0 Rev  
PARTS LIST  
Sheet 1 of 1

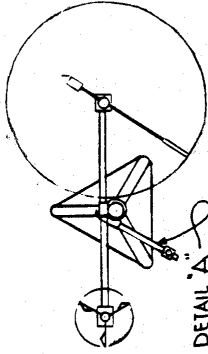
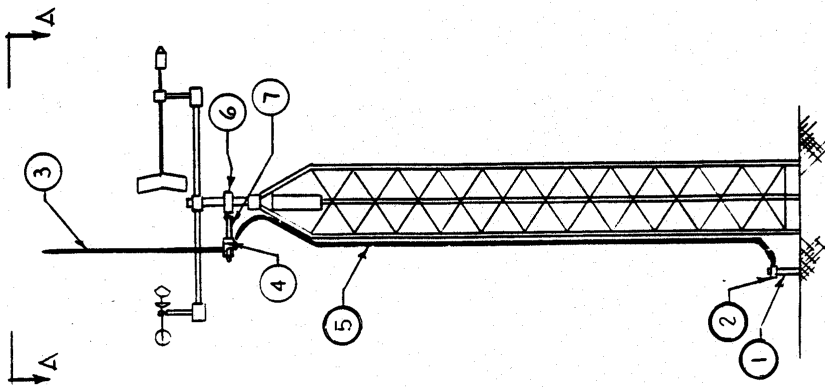
ITEM	SYM.NO	QTY	PART NO.	DESCRIPTION
6		1.0	10-1-1/4X1	CROSS, 1-1/4 IN X 1 IN

1 INCH MAST MOUNT  
P/N 100924G1 Rev  
PARTS LIST  
Sheet 1 of 1

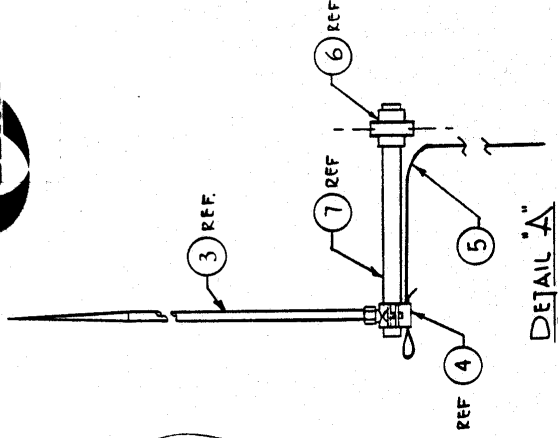
ITEM	SYM.NO	QTY	PART NO.	DESCRIPTION
6		1.0	10-1X1	CROSS, 1 IN X 1 IN

3/4 INCH MAST MOUNT  
P/N 100924G2 Rev  
PARTS LIST  
Sheet 1 of 1

ITEM	SYM.NO	QTY	PART NO.	DESCRIPTION
6		1.0	10-1X3/4	CROSS, 1 IN X 3/4 IN



SEE DETAIL "A"  
VIEW A-A



PARTS LIST ON A SIZE SHEET, 100124 SHT 2

TOLERANCES UNLESS OTHERWISE SPECIFIED		REVISIONS		BY		DATE		MATERIAL	
NO.	DESCRIPTION	NO.	DESCRIPTION	NO.	DESCRIPTION	NO.	DESCRIPTION	NO.	DESCRIPTION
DECIMAL	± .005	A	ECN 12-50	CA	12/5/82	CP	12/5/82	CP	12/5/82
FRACTIONAL	± .005	B	ECN 12-51	CA	12/5/82	CP	12/5/82	CP	12/5/82
ANGULAR	± .005	C	ECN 12-52	CA	12/5/82	CP	12/5/82	CP	12/5/82
		D	ECN 12-53	CA	12/5/82	CP	12/5/82	CP	12/5/82
		E	ECN 12-54	CA	12/5/82	CP	12/5/82	CP	12/5/82

CLIMATRONICS CORP.  
LIGHTNING PROTECTION KIT  
DRAWN BY CP  
DATE 12/5/82  
CHECKED BY CP  
DATE 12/5/82  
TRACED BY CP  
DATE 12/5/82  
DRAWING NO. R100924