



# DATA LOGGER SUPPORT SOFTWARE FOR WINDOWS

## FEATURES:

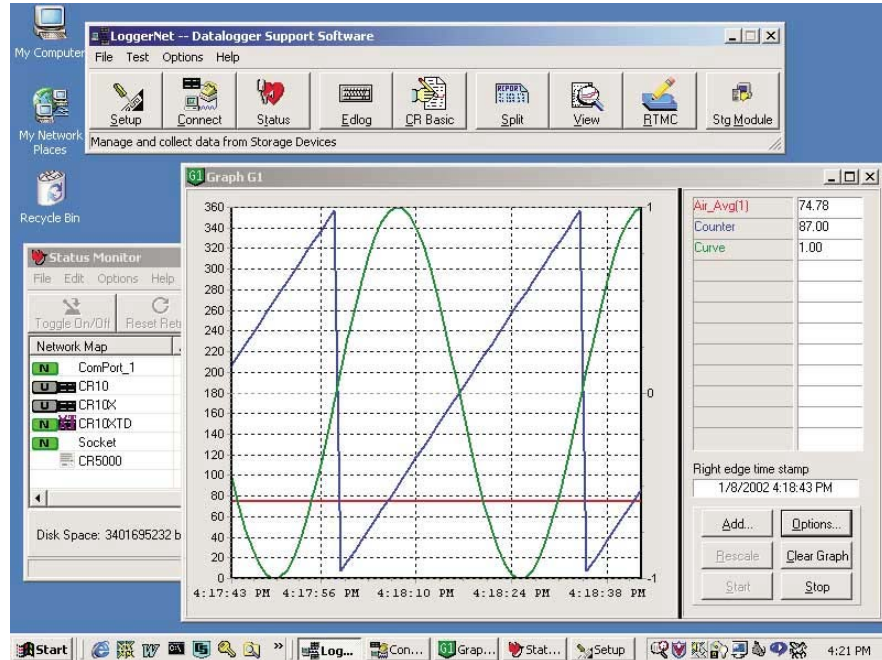
- Create custom data logger programs
- Display or graph data
- Build a custom display screen to view data or control flags/ports
- Collect data on demand or schedule
- Retrieve data using any of our telecommunications options
- Process data files
- Export data to third-party analysis packages
- Communicate with storage modules

The LOGGNET 32-bit software supports programming, communication, and reliable exchange of data between a PC and our IMP-850, IMP-860, IMP-890, and IMP-900 series of data loggers. Besides supporting communications between one data logger and a PC, LOGGNET can manage small and large data logger networks.

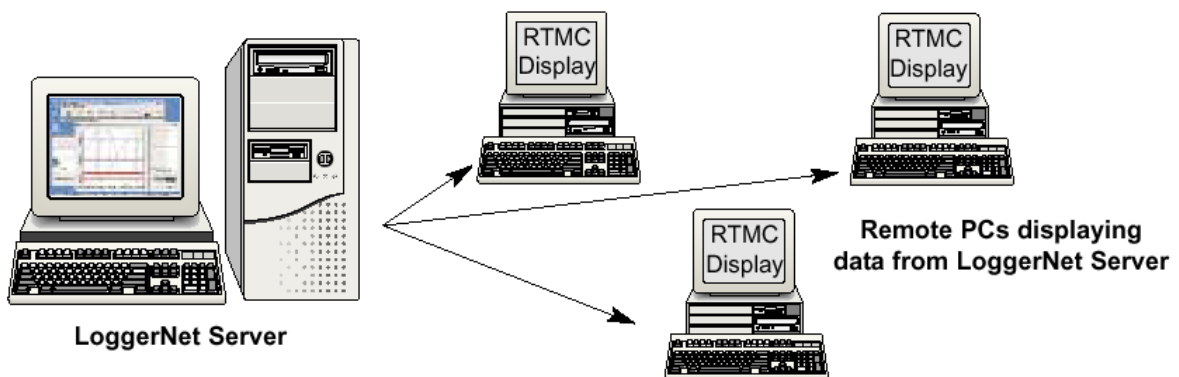
### Server/Client Applications

LOGGNET consists of a server application and several client applications integrated into a single product. The server application is the heart of LOGGNET communications. It runs on the main PC, using serial ports, telephony drivers, and Ethernet hardware to communicate with data loggers via phone modems, RF devices, and other peripherals. The server stores the data in a cache and writes data to ASCII files. Client applications connect to the server to change its settings, use its programs such as Edlog, Split, and RTMC, and to extract data. Client applications run on the same PC as the server application, providing a "one computer feel."

The RTMC client application can also run on other PCs in the same TCP/IP network allowing remote PCs to display data from or set variables, ports, and flags for any data logger in the network.



**LOGGNET runs from a tool bar that controls both the server and clients**



### **Setup, Connect, Status**

These tools are used to set or change data logger parameters, monitor status of network communications, reset the data-logger's clock, display real-time data, send programs from the computer to the data logger, and collect data on demand or according to a schedule. Communication links supported include TCP/IP, telephone, radio, cellular telephone, short-haul or multi-drop modems, and direct.

### **Edlog and CRBasic**

Edlog and CRBasic allow you to develop custom programs for any Climatronics data logger using select-from-a-list and fill-in-the-blank sequences. Both Edlog and CRBasic provide extensive on-line help, support long file names, allow final storage labels to be edited, and automatically check program structure and syntax when the program is compiled.

### **Split**

Split is used to process data files and create reports. It sorts and combines data based on time or conditions, converts between Julian dates and more conventional date/time stamps, provides simple HTML output, and allows variable column widths. You can run Split from a Task in LOGGERNET or from command lines.

### **View**

View is a handy tool for exploring data files, especially when using a laptop in the field. You can graph up to two fields, and the graphs can be saved as BMP, WMF or EMF files. The number of points displayed on a graph can be adjusted from 100 to 5000 allowing large time spans to be seen on one screen. You can configure the y-axis independently of the x-axis. View supports both array- and table-based data formats.

### **Real-Time Monitoring and Control (RTMC)**

RTMC displays input locations, flags, ports, and final storage data. It provides digital, tabular, graphical, and Boolean data objects, as well as alarms. Data from multiple data loggers can be combined on one display. Complex displays can be organized on multi-tabbed displays. RTMC includes several back-ground graphics, or you can import your own graphics to customize your screen.

### **SMS**

SMS allows you to retrieve all or part of the storage module's data, transfer data logger programs to and from storage modules, and reset and test storage modules. It's compatible with our CSM4M, CSM16M, CSM716, and CSM192 storage modules

### **Compatibility with Existing Software**

LOGGERNET combines CPC208W, LOGGERNET 1.0, RTMC, and CRBasic functions. It replaces earlier versions of CPC208 and CPC208W. LOGGERNET includes 32-bit versions of Edlog, Split, View, and SMS, and files created by 16-bit versions of these programs are forward compatible. LOGGERNET also converts CPC208W network setups to LOGGERNET network setups

### **Computer Requirements**

The minimum recommended hardware is a 300 MHz Pentium II processor with 64 Mbytes of RAM and at least a screen resolution of 800 x 600. LOGGERNET 2.0 is optimized for features in Windows NT, 2000, or XP that maximize the reliability of unattended scheduled data collection and multitasking applications programs. LOGGERNET can successfully run on Windows 95, 98, or ME if you limit the number of screens opened at one time.



**Climatronics Corporation**  
140 Wilbur Place  
Bohemia, NY 11716-2404

TEL: 631-567-7300  
FAX: 631-567-7585  
E-Mail: sales@climatronics.com