

# DATA LOGGER SUPPORT SOFTWARE FOR WINDOWS

## FEATURES:

- IBM-PC Compatible
- Multiple Communication Media
- Remote Control of Data Logger
- Report Generation

The CPC208W software facilitates programming, communication, and reliable exchange of data between a PC and our IMP-850 and IMP-860 data loggers. CPC208W's interactive tool-bar launches and controls independent windows used to communicate with data loggers, edit programs, view and graph real-time data, retrieve stored data, and process data files. The toolbar is free-floating and its orientation can be either horizontal or vertical.



### Communicating with Setup and Connect

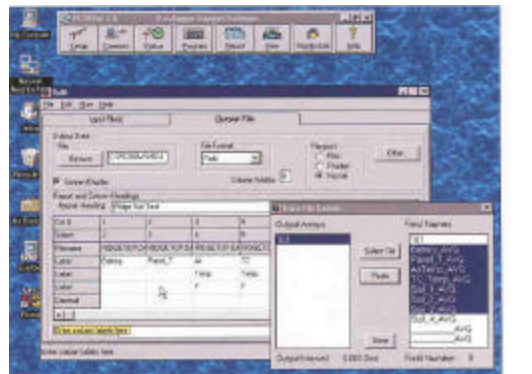
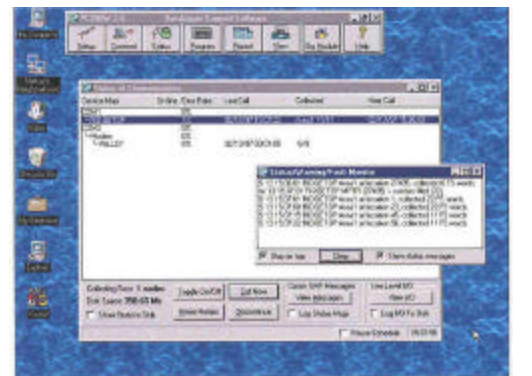
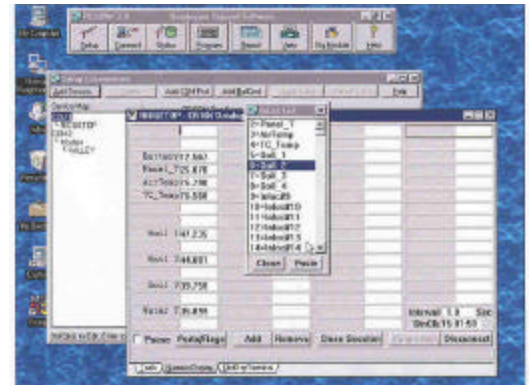
- Allows you to build communication links for one station or an entire network
- Supports telephone, short haul or multi-drop modems, and direct communication links
- Collects data on demand or schedule
- Transfers programs to the data logger
- Resets the data logger's clock
- Controls data logger flags and control ports
- Monitors and displays real-time measurements in tabular or graphical form

### Assessing Communications with Status

- Monitors your entire network from one screen
- Launches "stay-on-top" windows for status messages and low-level input/output communications
- Saves status messages and low-level input/output communications to log files

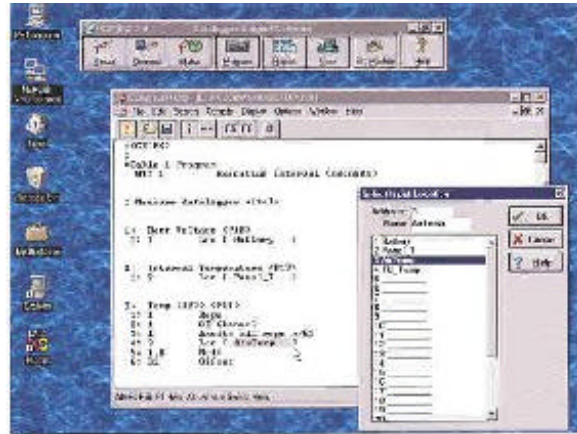
### Creating and Editing Data Logger Programs with EDLOG

- Uses "select-from-a-list" and "fill-in-the-blank" programming
- Provides point-and-click access to pick lists for inserting instructions, selecting parameters, and accessing help
- Displays multiple programs, allowing cut and paste between them
- Allows comments to be inserted for documentation
- Supports direct entry of algebraic expressions to process data



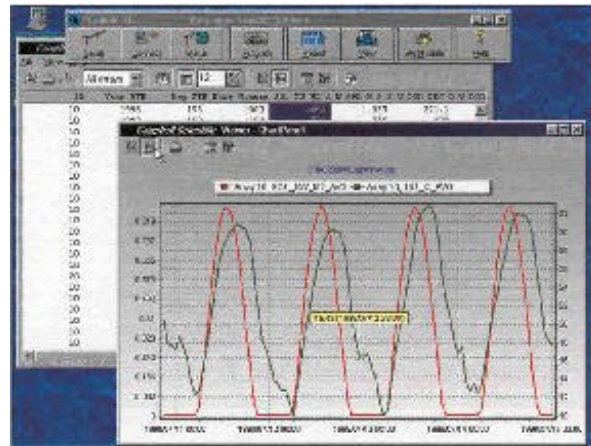
### Processing Data with SPLIT

- Allows you to select data files, choose data fields, and set options with point-and-click functions
- Sorts and combines data based on time or conditions
- Splits large data files into smaller, more easily analyzed files
- Processes data using arithmetic operators, math functions, spatial functions, and time-series functions
- Creates output files that are compatible with spreadsheet programs
- Supports command line entries for scheduling processing routines and sending the final report to a printer



### Displaying Data Files with VIEW

- Allows you to view or graph data files that were originally saved in comma-separated, binary, or printable ASCII format
- Displays data files in ASCII, tabular, or hexadecimal format
- Graphs up to two traces
- Prints files and graphs

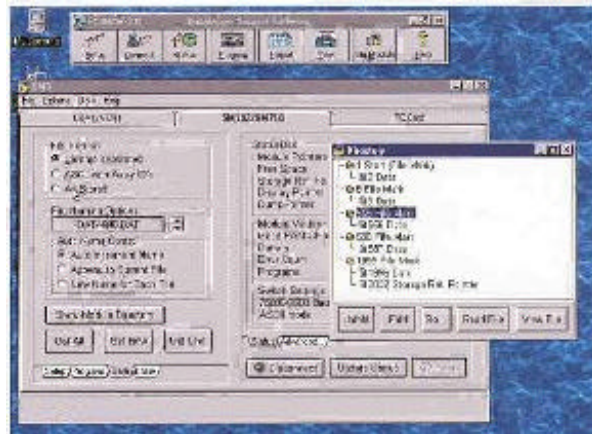


### Accessing Storage Modules with SMS

- Supports solid-state and card storage modules
- Transfers data logger programs to and from storage modules and cards
- Clears, configures, and tests storage modules or cards
- Retrieves all or part of a storage module's or card's data
- Allows viewing stored data before uploading to a computer
- Appends data to an existing file or creates a new one

### Minimum Requirements

- Windows 3.1, NT, 95, or 98 operating system required
- Complete installation requires 15 MB disk space
- VGA monitor, 3.5" disk drive
- RS-232 port(s) for modem or communication interfaces



**Climatronics Corporation**  
140 Wilbur Place  
Bohemia, NY 11716-2404

TEL: 631-567-7300  
FAX: 631-567-7585  
E-Mail: sales@climatronics.com