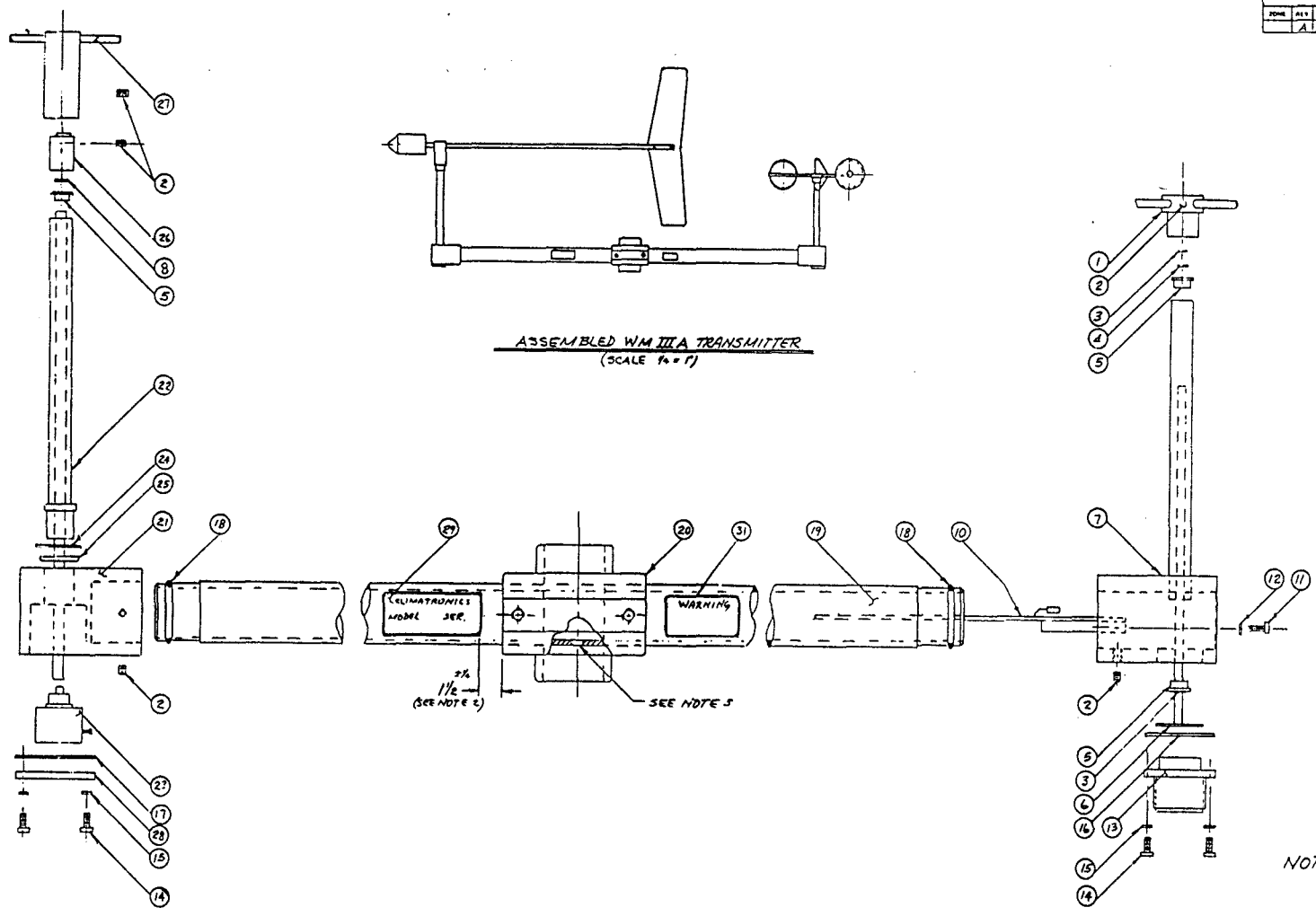


DWG. NO. 102083		REV. 1	REV. A	1
REVISIONS				
FORM	REV.	DESCRIPTION	DATE	APPROVED
A	SEE ECN 434C		8-17-71	J.P.



- NOTES:
- 1) FOR WIRING DIAGRAM, REFER TO DRAWING 400849.
 - 2) INSTALL ITEM 29 TO ITEM 19 PER DIM. SHOWN.
 - 3) WHEN ASSEMBLING ITEM 19 TO ITEM 20, HOLE LOCATION TO BE AS SHOWN.

PART TYPE REQ. NO.		PART OR DESCRIPTION NO.		QUANTITY OR QUANTITY		MATERIAL SPECIFICATION	
UNLESS OTHERWISE SPECIFIED DIMENSIONS ARE IN INCHES TOLERANCES ARE: FRACTIONS DECIMALS ANGLES				CONTRACT NO.		PARTS LIST	
MATERIAL				APPROVALS		DATE	
FINISH				DRAWN S. FRANK		6-18-71	
TEST ASST.				CHECKED [Signature]		7-9-71	
USED ON				THIRD		[Signature]	
APPLICATION				DO NOT SCALE DRAWING		SCALE FULL	
						WM III A, TRANSMITTER ASSY.	
DWG. NO. 102083						REV. A	
SHEET 1 OF 3						D 52332	

**WM-III A WIND SPEED/DIR SENSOR
P/N 102083 Rev A
PARTS LIST**

**Notes: ITEM 30 TO BE USED AS REQUIRED
ITEM 9 IS NOT USED**

102138 (G0)	1.0	WM-III LEXAN CUPSET ASSY
101286 (G1)	1.0	WM-III HEAVY DUTY CUPSET ASSY
101944 (H0)	1.0	WM-III VANE ASSY FAST RESPONSE
101292 (H1)	1.0	WM-III VANE ASSY HEAVY DUTY

ITEM	QTY	PART NO.	DESCRIPTION
1	0.0	102083G	SEE G LIST
102138 (G0)	1.0	WM-III LEXAN CUPSET ASSY	
101286 (G1)	1.0	WM-III HEAVY DUTY CUPSET ASSY	
2	6.0	SC8-17	SET SCREW 6-32 x 5/32 NO-MAR
3	2.0	Q2-12	RING RETAINER
4	1.0	SS1	SPACER KIT
5	3.0	500790	BEARING, RADIAL
6	1.0	100103	WIND SPEED SHAFT ASSEMBLY
7	1.0	100104	WND SPD COLUMN & SUP ASSY
8	1.0	SS1-27	SPACER .008
9			
10	1.0	102153	WIND SPEED AMPLIFIER, WM-III
11	2.0	MS51957-3	SCREW 2-56 x 1/4
12	2.0	MS35338-134	WASHER LOCK SPLIT #2
13	1.0	MS3102R14S-6P	CONNECTOR, RECEPTACLE
14	8.0	MS51957-15	SCREW 4-40 x 3/8 PH
15	8.0	MS35338-135	WASHER, LOCK SPLIT #4
16	1.0	10-40450-14	GASKET, CONNECTOR #14
17	1.0	10-40450-20	GASKET
18	2.0	2-018	O-RING, BUNA N, 60 DUROMETER
19	1.0	500135	CROSSARM - WM-III
20	1.0	10-3/4X3/4	CROSS, 3/4 IN X 3/4 IN
21	1.0	500130	WIND DIRECT SUPPORT WMIII
22	1.0	100105	WND DIR COLUMN ASSEMBLY
23	1.0	102084	WM-III A POT AND SHAFT ASSY.
24	1.0	AN960-C816	WASHER FLAT 1/2
25	1.0	2-014	O-RING, BUNA N, 60 DUROMETER
26	1.0	500070	CAP, DIRECTION WM-III
27	0.0	102083H	SEE H LIST
101944 (H0)	1.0	WM-III VANE ASSY FAST RESPONSE	
101292 (H1)	1.0	WM-III VANE ASSY HEAVY DUTY	
28	1.0	500131	COVER WIND DIRECT WMIII
29	1.0	500827	LABEL, SERIAL NO/PART NO
30	0.0	PVC-105-10	TUBING, CLEAR AWG#10
31	1.0	501350	LABEL, WARNING
	0.0	400849	SCHEMATIC