



*User's Guide for
Climatronics
WeatherView Aviation*

*140 Wilbur Place
Bohemia, NY 11716
Phone (631) 567-7300
Fax (631) 567-7585
Email: sales@climatronics.com*

Table of Contents

1.	WEATHERVIEW AVIATION OVERVIEW.....	1
1.1	SYSTEM OVERVIEW	1
1.2	APPLICATION OVERVIEW	2
1.3	APPLICATION DATA PROCESSING	4
1.3.1	<i>Sensor Update</i>	4
1.3.2	<i>Data Averaging and Output Interval</i>	4
1.3.2.1	Average Data Processing and Display	4
1.3.2.2	Data Storage.....	5
1.3.3	<i>Data FTP Upload</i>	6
1.4	APPLICATION VIEWS	7
1.4.1	<i>Normal View</i>	7
1.4.1.1	Normal View Elements	8
1.4.2	<i>Airport View</i>	9
1.4.2.1	Airport View Elements	10
1.5	APPLICATION MENUS	10
1.5.1	<i>File</i>	11
1.5.1.1	Exit.....	11
1.5.2	<i>View</i>	11
1.5.2.1	Normal Display	11
1.5.2.2	Airport Display	11
1.5.2.3	Instantaneous Data	11
1.5.2.4	Average Data	11
1.5.2.5	Current Log File	12
1.5.2.6	Archived Log File	12
1.5.2.7	Current Input Data	13
1.5.2.8	Toolbar.....	13
1.5.2.9	Status Bar.....	14
1.5.3	<i>Setup</i>	14
1.5.3.1	System Settings	14
1.5.3.2	System Configuration	16
1.5.3.3	Serial Interface Settings	17
1.5.3.4	FTP Settings.....	18
1.5.3.5	TCP/IP Settings	19
1.5.3.6	Colors.....	19
1.5.4	<i>Units</i>	20
1.5.4.1	Wind Speed – Miles Per Hour.....	21
1.5.4.2	Wind Speed – Meters Per Second.....	21
1.5.4.3	Wind Speed – Knots	21
1.5.4.4	Temperature – Fahrenheit	21
1.5.4.5	Temperature – Centigrade.....	21
1.5.4.6	Humidity – Relative Humidity.....	21
1.5.4.7	Humidity – Dewpoint.....	21
1.5.4.8	Pressure – Inches Mercury.....	21
1.5.4.9	Pressure – Millibars	21
1.5.4.10	Pressure – Baro. Pressure.....	22
1.5.4.11	Pressure – QNH	22
1.5.4.12	Precipitation – Inches.....	22
1.5.4.13	Precipitation – Millimeters.....	22
1.5.5	<i>Help</i>	22
1.5.5.1	WeatherView Aviation Help.....	22
1.5.5.2	About WeatherView Aviation	22
1.6	REMOTE WORKSTATION - APPLICATION VIEW.....	23
1.7	REMOTE WORKSTATION - APPLICATION MENUS.....	23
1.7.1	<i>Remote Workstation - File</i>	24
1.7.1.1	Remote Workstation - Exit.....	24
1.7.2	<i>Remote Workstation - View</i>	24
1.7.2.1	Remote Workstation - Normal Display	24
1.7.2.2	Remote Workstation - Airport Display	24
1.7.2.3	Remote Workstation - Instantaneous Data	24

1.7.2.4	Remote Workstation - Average Data	24
1.7.2.5	Remote Workstation - Toolbar	24
1.7.2.6	Remote Workstation - Status Bar	25
1.7.3	<i>Remote Workstation - Setup</i>	25
1.7.3.1	Remote Workstation - TCP/IP Settings	25
1.7.3.2	Remote Workstation - Colors	25
1.7.4	<i>Units</i>	26
1.7.4.1	Remote Workstation - Wind Speed – Miles Per Hour	27
1.7.4.2	Remote Workstation - Wind Speed – Meters Per Second	27
1.7.4.3	Remote Workstation - Wind Speed – Knots	27
1.7.4.4	Remote Workstation - Temperature – Fahrenheit	27
1.7.4.5	Remote Workstation - Temperature – Centigrade	27
1.7.4.6	Remote Workstation - Humidity – Relative Humidity	27
1.7.4.7	Remote Workstation - Humidity – Dewpoint	27
1.7.4.8	Remote Workstation - Pressure – Inches Mercury	27
1.7.4.9	Remote Workstation - Pressure – Millibars	27
1.7.4.10	Remote Workstation - Pressure – Baro. Pressure	28
1.7.4.11	Remote Workstation - Pressure – QNH	28
1.7.4.12	Remote Workstation - Precipitation – Inches	28
1.7.4.13	Remote Workstation - Precipitation – Millimeters	28
1.7.5	<i>Remote Workstation - Help</i>	28
1.7.5.1	Remote Workstation - WeatherView Aviation Help	28
1.7.5.2	Remote Workstation - About WeatherView Aviation	28

List of Figures

FIGURE 1.1-1	WEATHERVIEW AVIATION BLOCK DIAGRAM.....	1
FIGURE 1.2-1	MAIN APPLICATION WINDOW	2
FIGURE 1.4-1	NORMAL VIEW, INSTANTANEOUS DATA MODE	7
FIGURE 1.4-2	NORMAL VIEW, AVERAGE DATA MODE	8
FIGURE 1.4-3	AIRPORT VIEW, INSTANTANEOUS DATA MODE.....	9
FIGURE 1.4-4	AIRPORT VIEW, AVERAGE DATA MODE.....	10
FIGURE 1.5-1	FILE MENU	11
FIGURE 1.5-2	VIEW MENU	11
FIGURE 1.5-3	CURRENT DATA LOG DISPLAY	12
FIGURE 1.5-4	FILE OPEN DIALOG.....	12
FIGURE 1.5-5	ARCHIVED LOG DATA DISPLAY	13
FIGURE 1.5-6	LAST RECEIVED INPUT DATA DISPLAY	13
FIGURE 1.5-7	SETUP MENU	14
FIGURE 1.5-8	SYSTEM SETTINGS DIALOG	14
FIGURE 1.5-9	SYSTEM CONFIGURATION DIALOG	16
FIGURE 1.5-10	SENSOR SERIAL INTERFACE SETTINGS DIALOG.....	17
FIGURE 1.5-11	FTP SETTINGS DIALOG	18
FIGURE 1.5-12	TCP/IP SETTINGS DIALOG	19
FIGURE 1.5-13	BACKGROUND SELECTION SUBMENU	19
FIGURE 1.5-14	COLOR SELECTION MENU	20
FIGURE 1.5-15	UNITS MENU	20
FIGURE 1.5-16	HELP MENU.....	22
FIGURE 1.5-17	ABOUT WEATHERVIEW AVIATION DIALOG	22
FIGURE 1.6-1	REMOTE WORKSTATION APPLICATION VIEW	23
FIGURE 1.7-1	REMOTE WORKSTATION - FILE MENU.....	24
FIGURE 1.7-2	REMOTE WORKSTATION - VIEW MENU.....	24
FIGURE 1.7-3	REMOTE WORKSTATION - SETUP MENU.....	25
FIGURE 1.7-4	REMOTE WORKSTATION - TCP/IP SETTINGS DIALOG.....	25
FIGURE 1.7-5	REMOTE WORKSTATION - BACKGROUND SELECTION SUBMENU	25
FIGURE 1.7-6	REMOTE WORKSTATION - COLOR SELECTION MENU	26
FIGURE 1.7-7	REMOTE WORKSTATION - UNITS MENU.....	26
FIGURE 1.7-8	REMOTE WORKSTATION - HELP MENU	28
FIGURE 1.7-9	REMOTE WORKSTATION - ABOUT WEATHERVIEW AVIATION REMOTE DIALOG	28

List of Tables

TABLE 1.3-1	PRINTABLE LOG DATA FORMAT	5
TABLE 1.3-2	COMMA DELIMITED LOG DATA FORMAT	6
TABLE 1.5-1	DISPLAYED DIRECTION VERSUS SENSOR SUPPLIED VALUE AND DIRECTION.....	15

1. WeatherView Aviation Overview

1.1 System Overview

A simplified block diagram of a typical WeatherView Aviation installation is shown in Figure 1.1-1. The WeatherView Aviation base workstation is a PC computer running Microsoft Win9x/NT/2000 with RS-232 and Ethernet LAN interfaces. WeatherView Aviation periodically receives raw meteorological data from sensors over the RS-232 serial link. WeatherView Aviation processes the raw data and stores it locally. WeatherView Aviation also displays the processed meteorological data using one of two graphical representations, a so-called 'normal' display or an 'airport' display. On either display type, the user can select to view either the instantaneous meteorological data values or average values over a user selectable period. Additionally, WeatherView Aviation creates a web browser viewable representation of either the normal or airport weather data screens and uploads it periodically via LAN and/or Internet FTP to up to two network servers. It also appends the average data to a rolling data log file that may be reviewed by the user. Remote Stations on the LAN running the WeatherView Aviation application in remote station mode access the meteorological data collected by the WeatherView Aviation base station via TCP/IP. Remote stations present the same graphical and textual displays as the WeatherView Aviation base station. There can be only one WeatherView Aviation application running in base station mode, while there can be numerous WeatherView Aviation applications running in remote mode.

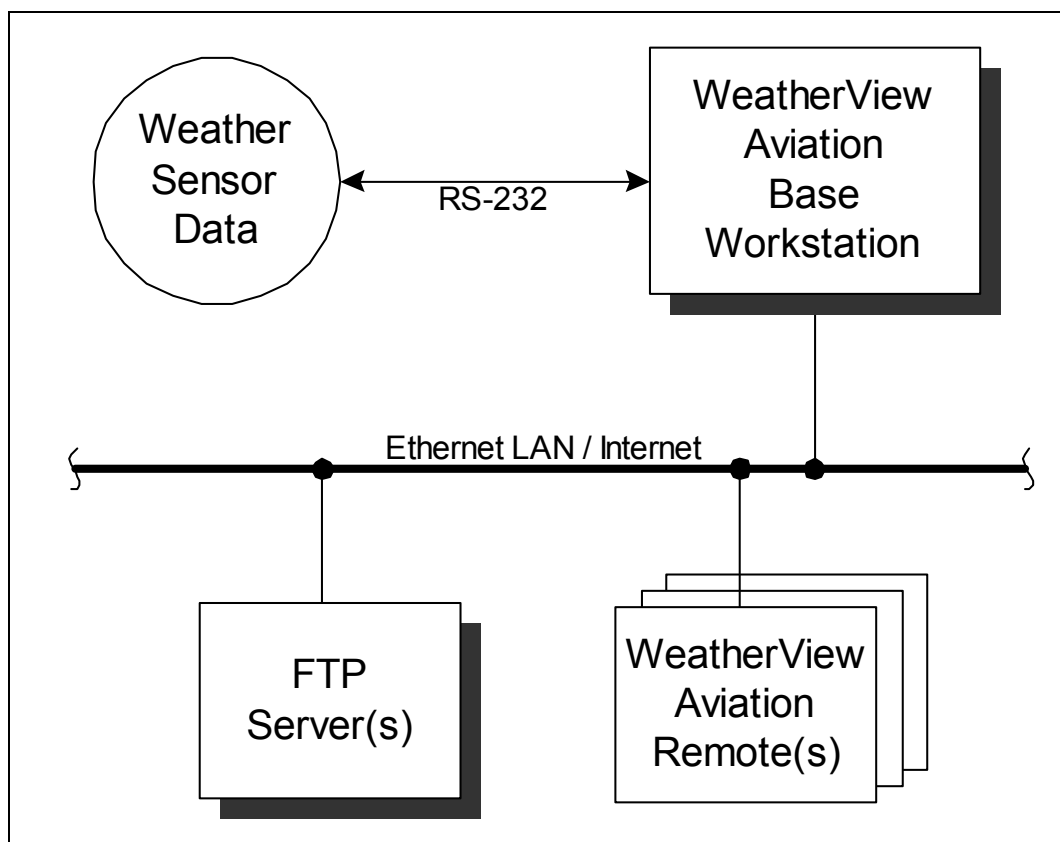


Figure 1.1-1 WeatherView Aviation Block Diagram

1.2 Application Overview

The main application window for WeatherView Aviation (running in base station mode) is shown in Figure 1.2-1. In this example the instantaneous airport view is shown. The application follows standard Windows conventions for layout and control.

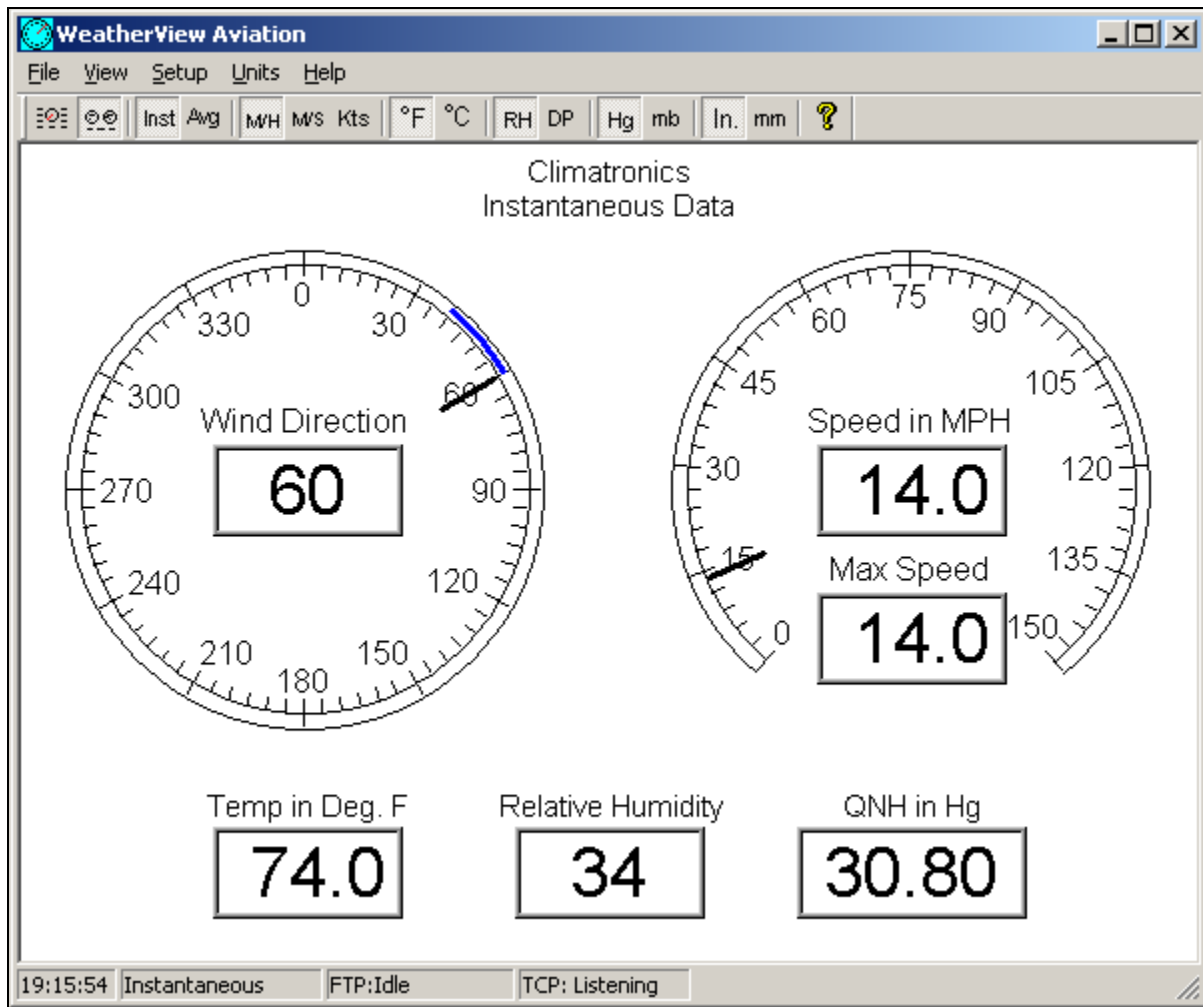


Figure 1.2-1 Main Application Window

Application functions are accessed primarily through the menu bar. Clicking on a menu item either performs a function or reveals a submenu, from which an item may be selected.

The toolbar presents fast access to some of the frequently used menu functions. Clicking on a toolbar button performs the same function as the associated menu item.

At the bottom of the display is the status bar. The status bar contains four status panes. The contents of the four panes are:

- Time – current PC time.
- Type of data currently displayed (either instantaneous or average).
- FTP upload status (Base station mode only) –
 1. FTP: Idle: no current FTP activity.
 2. FTP: Initialize: FTP process is initializing the connection to the server.
 3. FTP: Login: FTP process is attempting to login to the server.
 4. FTP: Upload: FTP process is uploading to the FTP server.
 5. FTP: Error ###: FTP process experienced an error. If error persists, report error identifier to system administrator.
- TCP/IP status (Base station mode) –
 1. TCP: Listening: WeatherView Aviation base station server awaiting connection to a WeatherView Aviation remote.
 2. TCP: # Client(s): WeatherView Aviation base station server connected to ‘#’ clients.
 3. TCP: Sock Err: WeatherView Aviation application unable to create a server TCP/IP socket. Restart application. If error persists, report error to system administrator.
 4. TCP: Listen Err: WeatherView Aviation base station server not able to set TCP/IP socket to ‘listen’ for incoming connection requests. Restart application. If error persists, report error to system administrator.
- TCP/IP status (Remote station mode) –
 1. TCP: Connected: WeatherView Aviation remote connected to WeatherView Aviation base station.
 2. TCP: No Connect: WeatherView Aviation remote no longer connected to WeatherView Aviation base station.
 3. TCP: SockErr: WeatherView Aviation application unable to create a client TCP/IP socket. Restart application. If error persists, report error to system administrator.
 4. TCP: No Server: WeatherView Aviation remote not able to connect to the base station IP specified in the TCP/IP Settings Dialog (see Section 1.7.3.1). Confirm base station IP address with system administrator.

1.3 Application Data Processing

Processing in the WeatherView Aviation base station is driven by three periodic, but independent, data update rates- the sensor update data rate, the averaging and output data rate and the FTP upload data rate (when 'instantaneous' FTP mode is selected by the user). The processing and activities that occur during these three intervals are described below.

1.3.1 Sensor Update

The sensor update rate is defined by the particular application, and set by the user using the System Settings dialog (see Section 1.5.3.1). When data is received on the serial interface, the data is stored internally and if an instantaneous data view is currently active, all instantaneous values are refreshed with the new current values. Additionally, if the Current Input Data screen is being viewed (see Section 1.5.2.7) or if the System Configuration dialog is displayed (see Section 1.5.3.2), the current input data stream (and the individual sensor components in the case of the system configuration dialog) is refreshed to the latest values received. Finally, the instantaneous data is sent to any and all WeatherView Aviation remote workstations connected to the base station.

1.3.2 Data Averaging and Output Interval

The data averaging and output interval is set by the user using the System Settings dialog (see Section 1.5.3.1). Two basic operations are performed periodically at the data averaging and output interval:

1. Computation and display of average data
2. Addition of the average data to the current log file
3. Transmission of the average data to the remote workstations (block average mode only)

The data averaging and output operations only start after at least a full interval (as set by the user) has passed since the start of the WeatherView Aviation application. Additionally, the data averaging and output operations take place on even minute boundaries of the system clock. For example, if the averaging interval is set to two minutes and the application is started at 8:01:32, the data averaging and output will take place at 8:04:00, 8:06:00, 8:08:00 and so on. The data averaging and output functions are described below.

1.3.2.1 Average Data Processing and Display

All sensor readings obtained during an averaging interval are stored internally. At each averaging cycle, an average is computed for all of the individual sensor readings based upon the type of averaging specified by the user via the System Settings dialog (see Section 1.5.3.1). If a rolling average is selected, the average data represents the average of the values over the last average interval (as specified with the Average Interval radio boxes). If block average is selected on the other hand, the display will only update at the average interval selected and the average data shown represents the average over the prior average interval. Additionally, the maximum wind speed reading obtained during the last average interval and the wind direction extents are determined at each averaging cycle. The individual sensor average values are updated if either the normal or airport average view is currently displayed, while the maximum wind speed and wind direction variability is always updated on all four variations of the display.

1.4 Application Views

Two basic views are available in the application client area – the normal view or the airport view. Selecting either view is performed using the view menu or using the associated toolbar button. Following standard Windows conventions, the application may be maximized, minimized, or resized using the sizing border. Each view can be set to show either the current instantaneous data or the average values of the data over a user specified interval.

1.4.1 Normal View

The normal view is selected using the View pulldown menu or by clicking on the normal view icon on the toolbar. The normal view consists of up to nine digital display areas and an analog wind direction meter. A sample instantaneous normal view is shown in Figure 1.4-1.

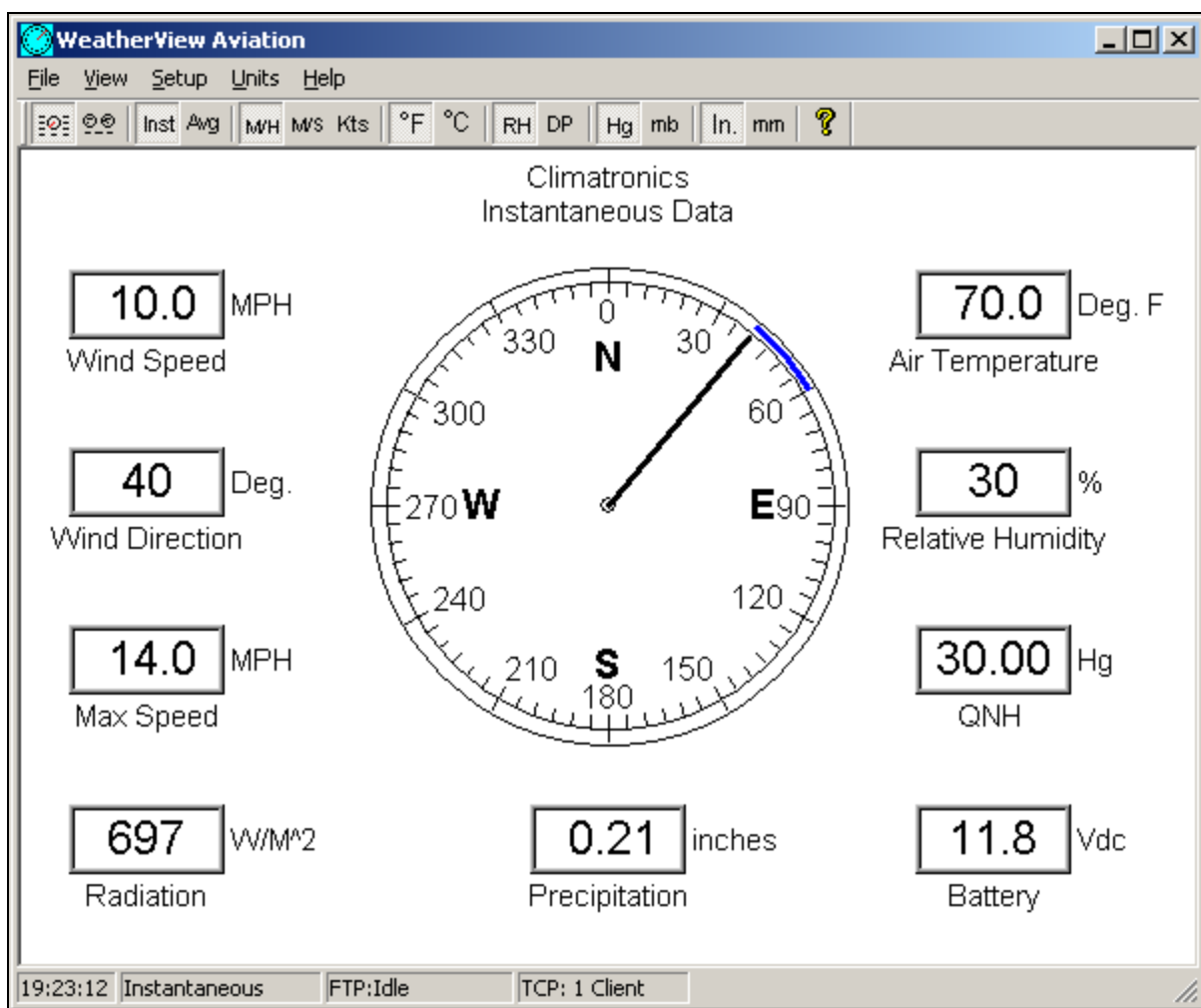


Figure 1.4-1 Normal View, Instantaneous Data Mode

The average normal view, which can be selected from the View pulldown or by clicking the appropriate icon on the toolbar, is very similar to the instantaneous normal display and is shown in Figure 1.4-2.

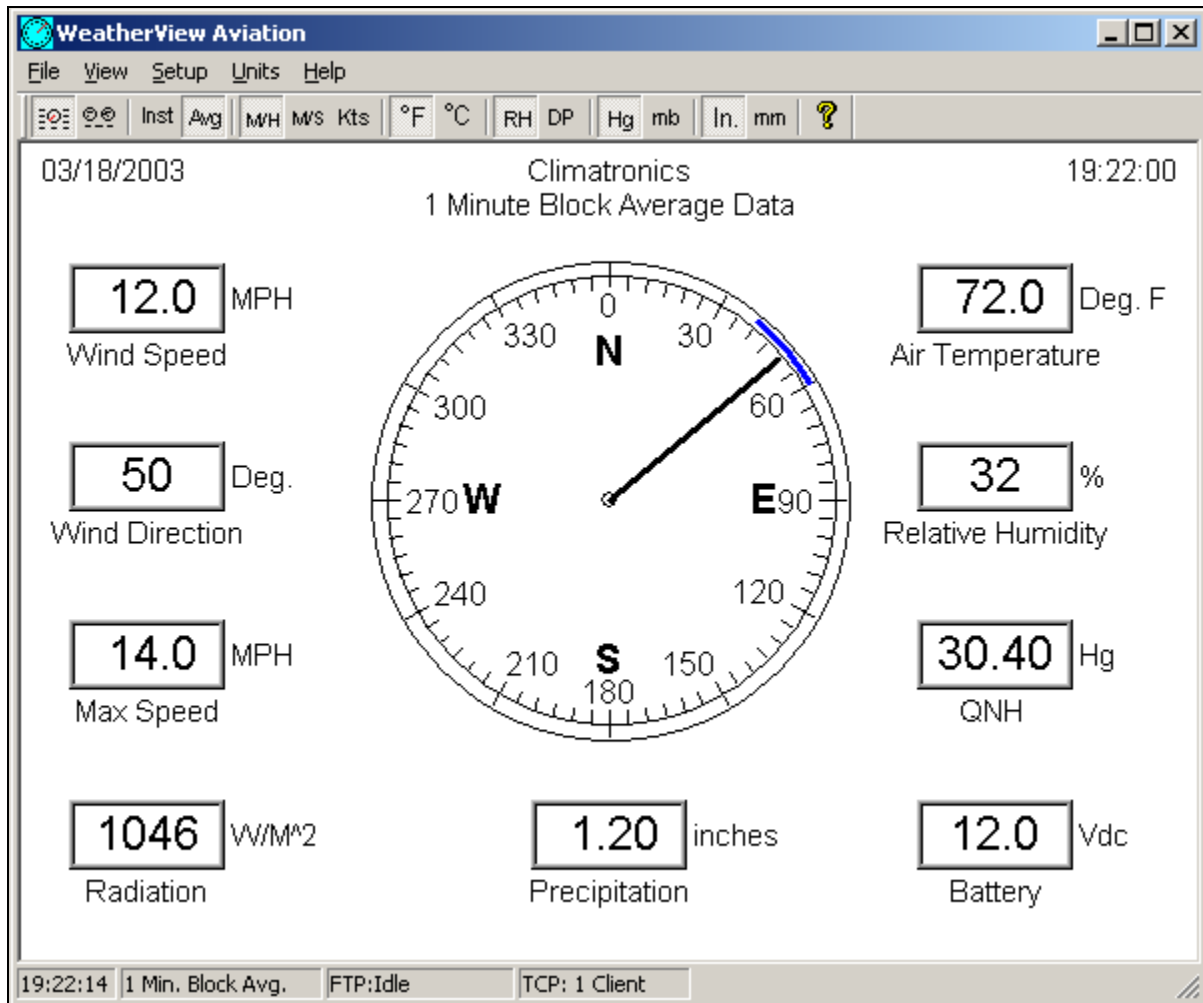


Figure 1.4-2 Normal View, Average Data Mode

1.4.1.1 Normal View Elements

In both the instantaneous and average normal views, digital display areas are provided for the wind speed, wind direction, maximum wind speed, radiation, air temperature, relative humidity, pressure/QNH and battery voltage/soil temperature/wet bulb temperature, depending on the sensors selected. The units of measure associated with each of these digital display areas can be varied using the Units pulldown menu or with the units icons on the toolbar. Note that the maximum speed display is unique in that there cannot be an instantaneous maximum wind speed. The maximum speed can only be calculated over the interval of interest. On the instantaneous display therefore, the maximum speed indicator shows the maximum speed over the last average interval, not any instantaneous value. As such, the maximum speed indicator on the instantaneous display will show asterisks until the first average interval has passed and a maximum value can be computed.

The normal view also includes an easy to read analog display of the wind direction. The blue band on the analog dial indicates the variability of the wind direction over the last interval of interest. Like the maximum wind speed, the blue band will appear on the instantaneous display only after the average interval has passed and the wind variability can be calculated.

1.4.2 Airport View

The airport view is selected using the View pulldown menu or by clicking on the airport view icon on the toolbar. The airport view consists of up to six digital display areas and two analog meters, one indicating wind direction and the other indicating wind speed. The instantaneous version of the airport view is shown in Figure 1.4-3.

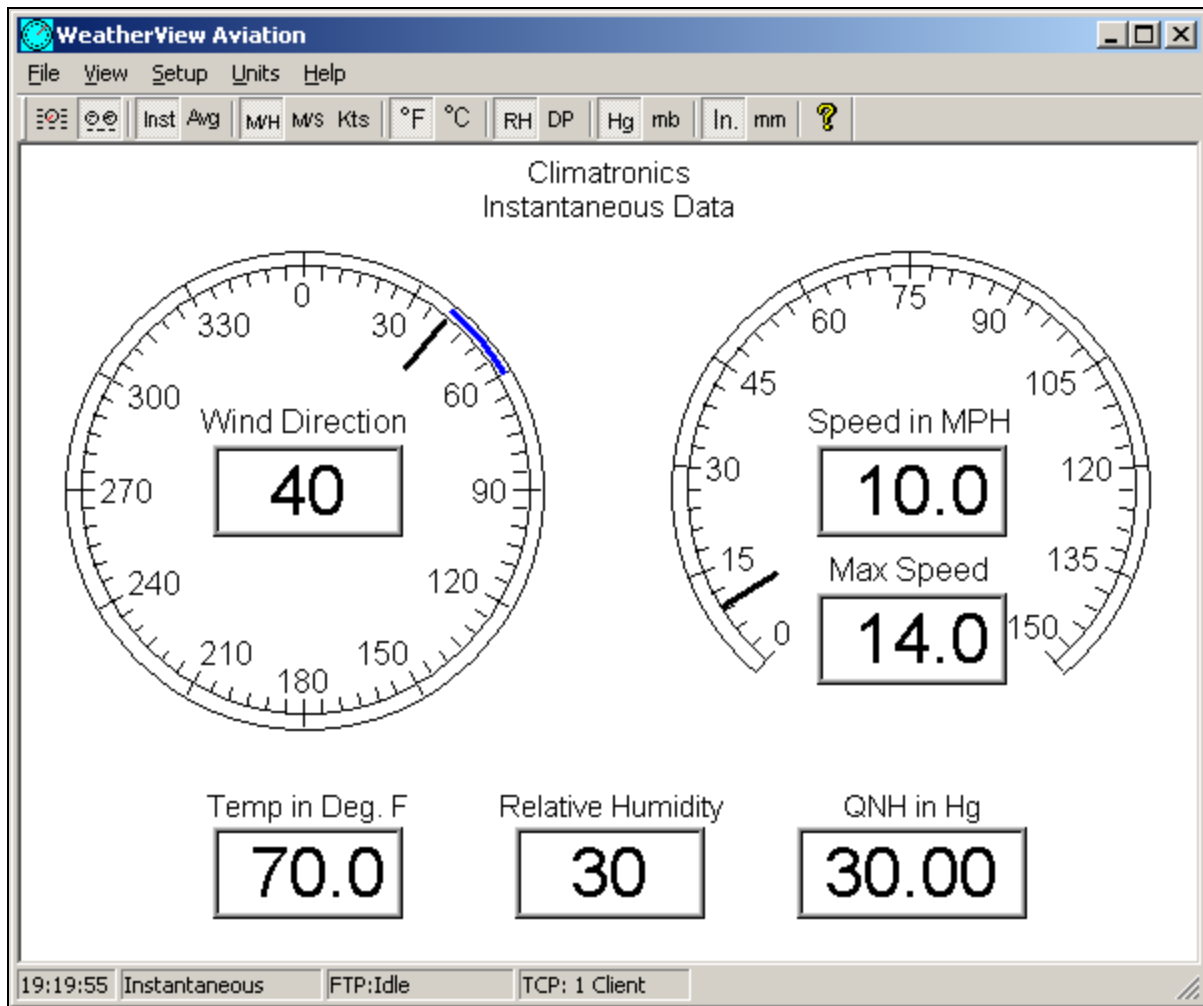


Figure 1.4-3 Airport View, Instantaneous Data Mode

The average airport view, which can be selected from the View pulldown or by clicking the appropriate icon on the toolbar, is very similar to the instantaneous airport display and is shown in Figure 1.4-4.

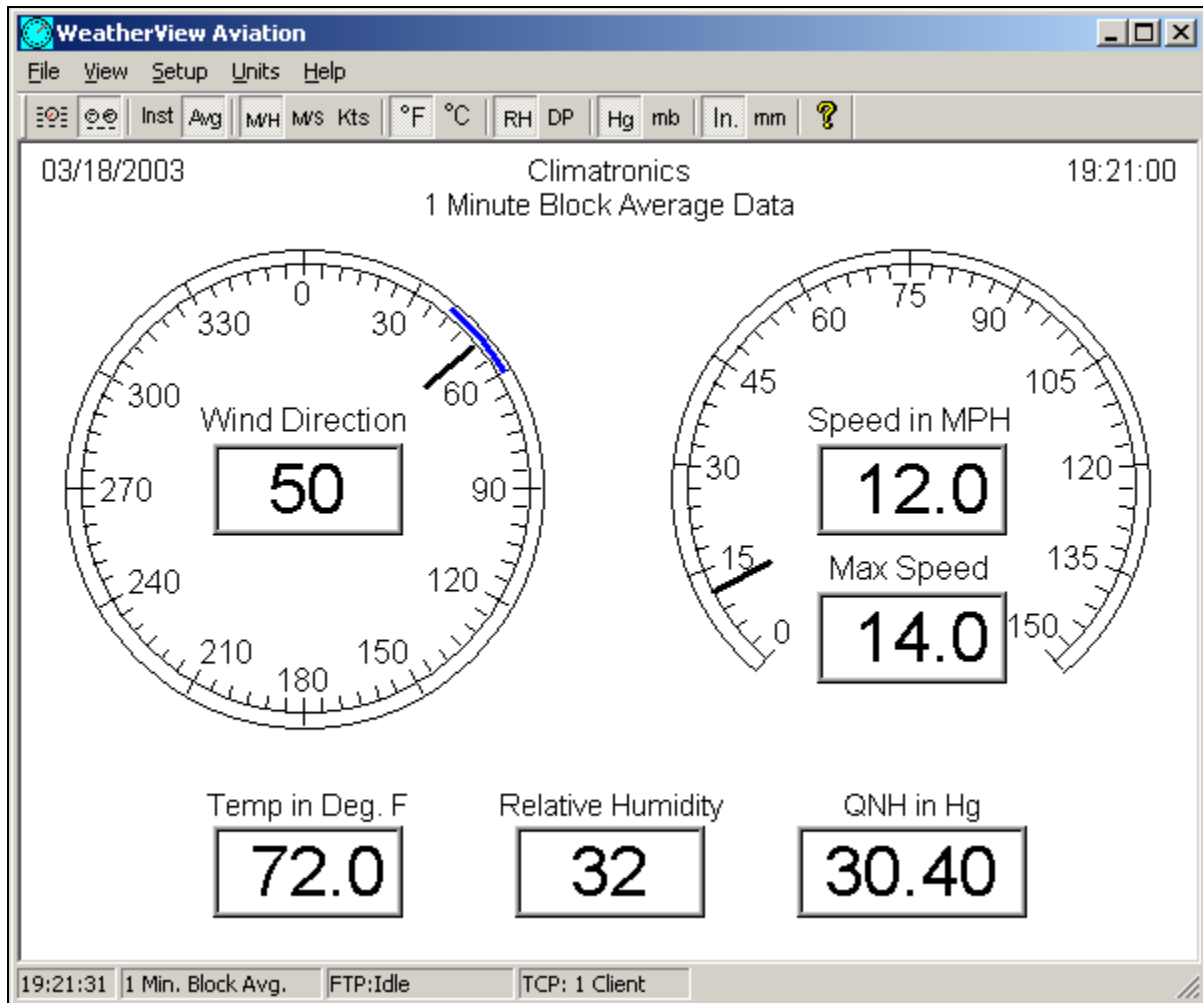


Figure 1.4-4 Airport View, Average Data Mode

1.4.2.1 Airport View Elements

In both the instantaneous and average airport views, digital display areas are provided for the wind direction, wind speed, maximum wind speed, air temperature, relative humidity, and pressure/QNH, depending on the sensors selected. The units of measure associated with each of these digital display areas can be varied using the Units pulldown menu or with the units icons on the toolbar.

The airport view also includes two easy to read analog displays of the wind direction and speed. The blue band on the wind direction analog dial indicates the variability of the wind direction over the last interval of interest.

1.5 Application Menus

Much of the operation of the WeatherView Aviation application is accomplished through the application menu. Selecting a menu item causes a submenu to be presented. Selecting a submenu item in turn causes an action to be performed, an interface element such as a dialog box to be displayed, or another submenu to be displayed. Menu items may be associated with a toolbar icon, and/or a keyboard “hot key” combination. The following sections describe the functions performed by each menu and submenu item.

1.5.1 File

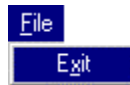


Figure 1.5-1 File Menu

1.5.1.1 Exit

Toolbar: No

Exits the application.

1.5.2 View

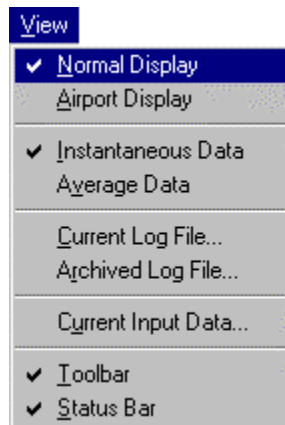


Figure 1.5-2 View Menu

1.5.2.1 Normal Display

Toolbar: 

The normal display view is opened. Refer to Section 1.4.1 for a complete description of this view.

1.5.2.2 Airport Display

Toolbar: 

The airport display view is opened. Refer to section 1.4.2 for a complete description of this view.

1.5.2.3 Instantaneous Data

Toolbar: 

The current data view (either airport or normal) is modified to show the instantaneous data values being received from the weather sensors.

1.5.2.4 Average Data

Toolbar: 

The current data view (either airport or normal) is modified to show the average data values over the specified average interval.

1.5.2.5 Current Log File ...

Toolbar: No

The Current Data Log file display is opened. The data log display allows the user to review the data stored in the current months log file. This file contains all data collected in the last month up to the time of display. A sample Current Data Log data log display is shown in Figure 1.5-3. The format of the data displayed is discussed in Section 1.3.2.2.

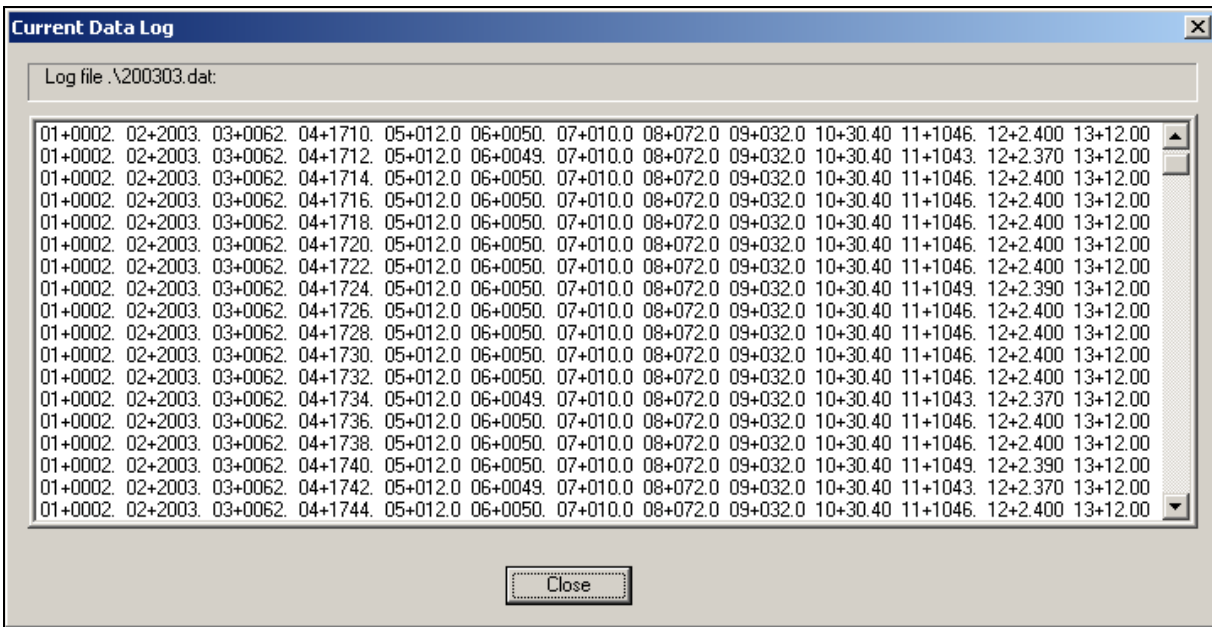


Figure 1.5-3 Current Data Log Display

1.5.2.6 Archived Log File ...

Toolbar: No

The Archived Log File selection allows the user to view an archived log file from a previous month. Selecting View Archived Log File causes a standard Windows Open File dialog to be displayed as shown in Figure 1.5-4.

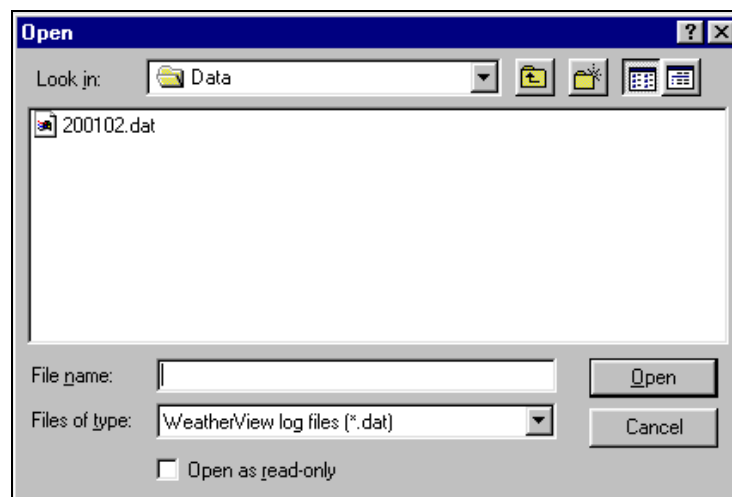


Figure 1.5-4 File Open Dialog

The user can browse for files using the 'Look In:' pulldown menu and the 'higher level' icon, and can select the file of choice by typing the filename in the appropriate box or by clicking on the file in the view window. Selecting Open (or double clicking a filename in the view area) causes the Archived Data Log view to be displayed showing the data in the selected file. The Archived Data Log display is identical to the Current log file Display. A sample archived data log view is shown in Figure 1.5-5.

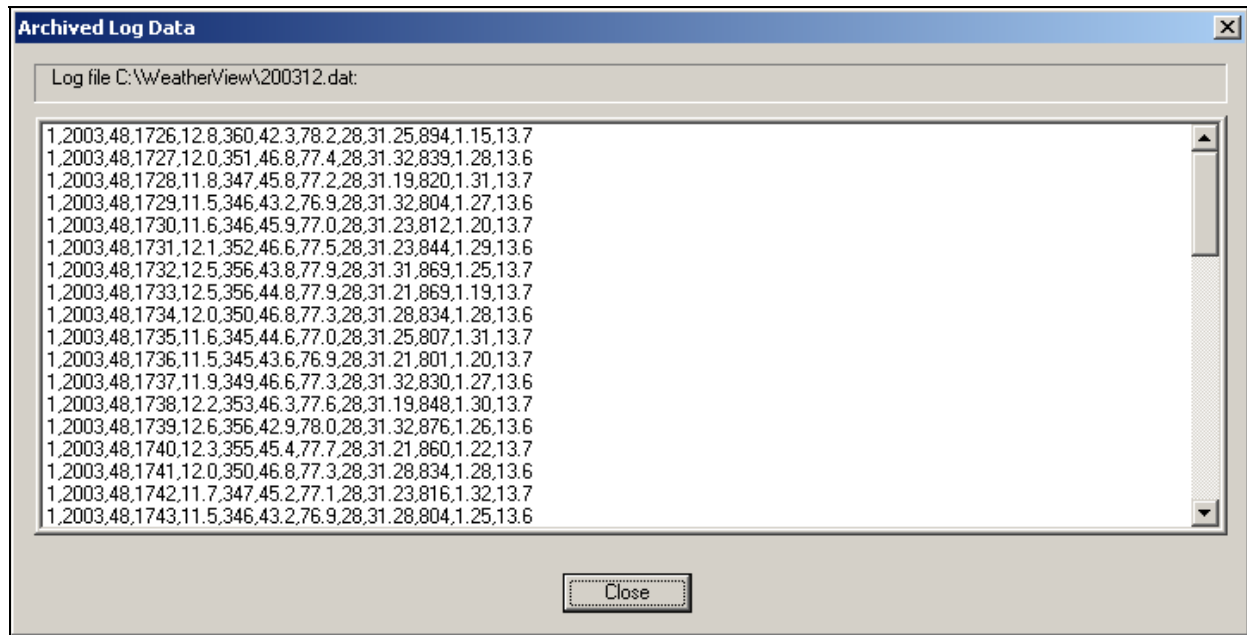


Figure 1.5-5 Archived Log Data Display

1.5.2.7 Current Input Data ...

Toolbar: No

The Current Input Data selection allows the user to view in real time the raw, unprocessed, meteorological sensor data received over the serial link. A sample Last Received Input Data screen is shown in Figure 1.5-6.

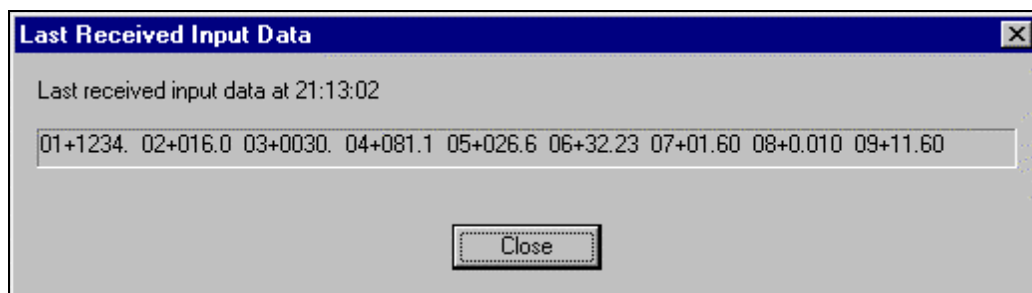


Figure 1.5-6 Last Received Input Data Display

1.5.2.8 Toolbar

Toolbar: No

The display of the main application toolbar is toggled on or off.

1.5.2.9 Status Bar

Toolbar: No

The display of the main application status bar is toggled on or off.

1.5.3 Setup

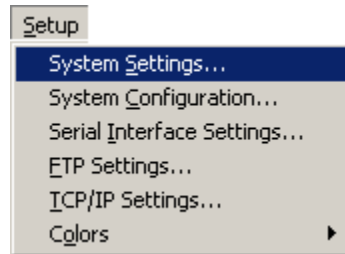


Figure 1.5-7 Setup Menu

1.5.3.1 System Settings ...

Toolbar: No

Presents the WeatherView Aviation System Settings dialog box (shown in Figure 1.5-8) that allows the user to set several key system parameters.

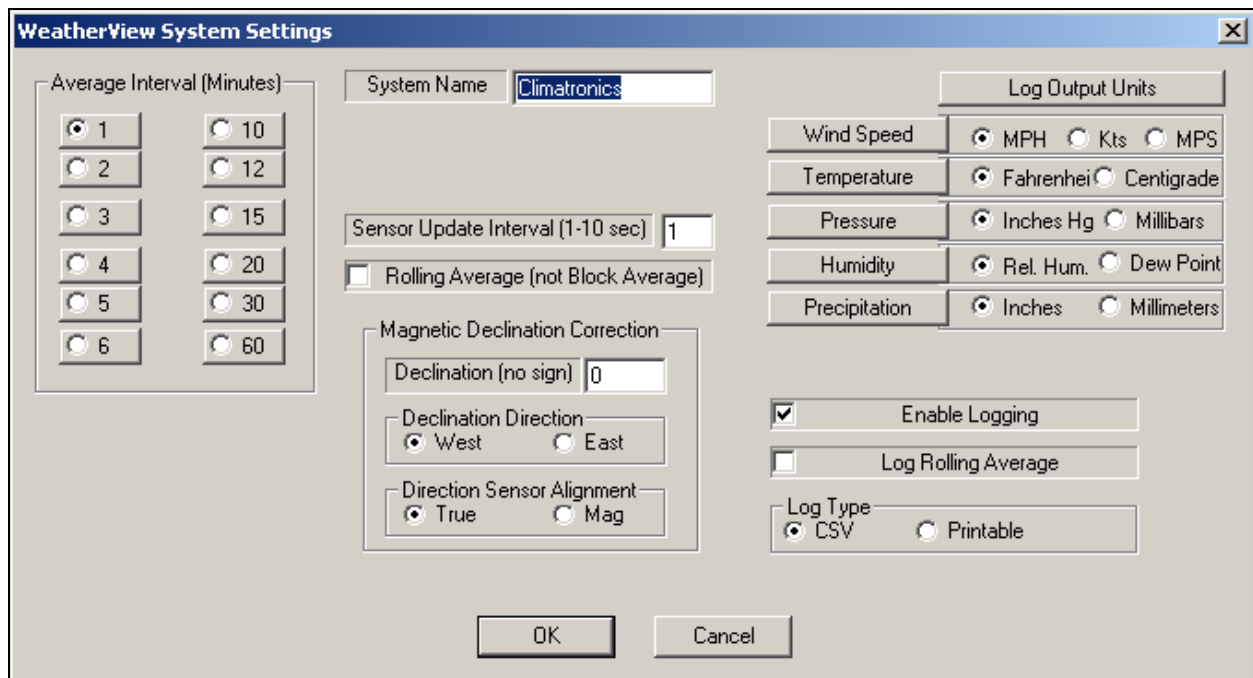


Figure 1.5-8 System Settings Dialog

The user is able to specify a system name, which is shown on the airport and normal views (including the FTP'ed views) using the System Name entry box. The Sensor Height and Site elevation are set with the appropriate edit boxes and must be specified accurately in order to assure accurate calculation of the QNH. The Sensor Update Interval must be set to the sensor update rate as defined by the specific hardware present for the given application. Failure to match the sensor update interval with the actual sensor update rate could lead to unpredictable and likely incorrect results. The Average Interval radio boxes enable the user to specify the time between the averaging and data output cycles (in minutes). Two types of data averaging are

available: rolling average or block average. If a rolling average is selected, the main data display will be updated every sensor update interval and the average data shown represents the average of the values over the last average interval (as specified with the Average Interval radio boxes). If block average is selected on the other hand, the display will only update at the average interval selected and the average data shown represents the average over the prior average interval.

Writing of the data log can be enabled or disabled via the Enable Logging checkbox. Additionally, the user can specify if the log should contain the block or rolling average via the Log Rolling Average checkbox and can specify whether the log data file should be written with a space delimited printable format or a comma delimited, spreadsheet friendly 'CSV' format (see Section 1.3.2.2). The user can further specify the units associated with each of the sensors in the log output file using the appropriate log output units radio boxes. Note that the log output file units specification is entirely independent of the output units displayed on either the airport or normal displays.

The Magnetic Declination factors are used specify declination correction of the wind directions provided by the weather sensors. The Direction Sensor Alignment radio box is used to specify what the sensor is actually providing, either degrees True or degrees Magnetic. The Declination Direction specifies whether the declination is in degrees West or degrees East. Finally, if the Direction Sensor Alignment is specified as True, and the Declination Direction is East, or the Direction Sensor Alignment is specified as Magnetic, and the Declination Direction is West then the Declination specified is subtracted from the raw wind direction value provided by the sensor. Similarly, if the Direction Sensor Alignment is specified as True, and the Declination Direction is West, or the Direction Sensor Alignment is specified as Magnetic, and the Declination Direction is East then the Declination specified is added to the raw wind direction value provided by the sensor. Table 1.5-1 below summarizes what direction is displayed given the four combinations of sensor value and specified declination direction.

Table 1.5-1 Displayed Direction versus Sensor Supplied Value and Direction

	Declination Direction: WEST	Declination Direction: EAST
Sensor Supplies Values as: Degrees TRUE	Displayed Wind Direction = Sensor Value + Declination	Displayed Wind Direction = Sensor Value - Declination
Sensor Supplies Values as: Degrees MAGNETIC	Displayed Wind Direction = Sensor Value - Declination	Displayed Wind Direction = Sensor Value + Declination

Any changes to the system settings are recorded in the application ".ini" file when the application is exited allowing the last settings to be recalled when the application is started.

1.5.3.2 System Configuration

Toolbar: No

Presents the WeatherView Aviation System Configuration dialog box (sample shown in Figure 1.5-9) that allows the user to match the WeatherView Aviation application to the incoming sensor data stream.

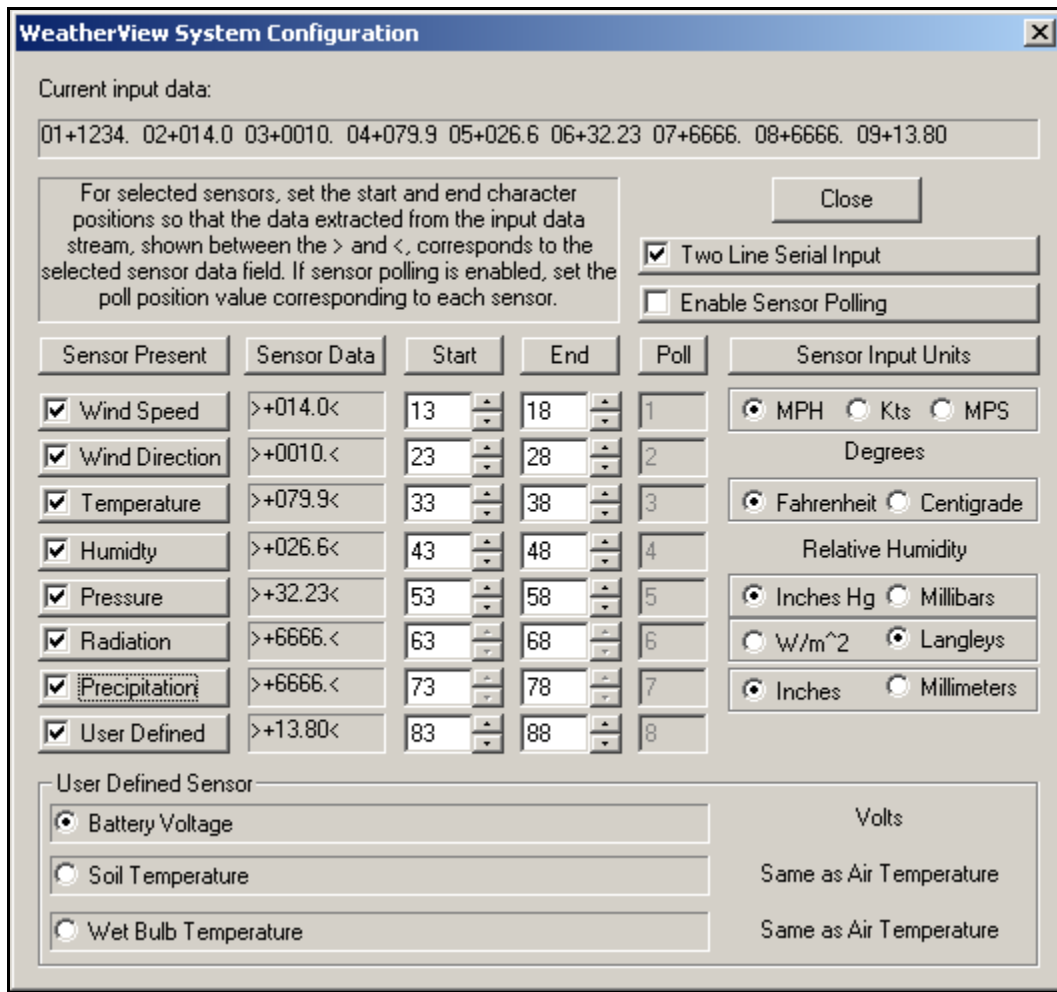


Figure 1.5-9 System Configuration Dialog

The format of the sensor data is dependent on the particular user's application. The top window of the System Configuration menu shows the current input data pattern. The user uses the rest of the dialog to match each meteorological sensor to the correct field in the data stream.

The check boxes next to each sensor enable the user to specify if a particular sensor is present in the application or not. For each sensor present, the user then uses the Start and End spin boxes to select the starting and ending characters in the data stream which correspond to the sensor data. The Sensor Data boxes update in real time to indicate the actual characters that will be used to specify the sensor data. The user can use the up and down arrows next to each spin box to vary the start and end points, or type directly into the start and end boxes. For certain sensor types, the user must specify the units associated with the input data. Note that this unit specification is independent of the output units displayed on either the airport or normal displays. The units

specified on the System Configuration Menu must match the units associated with the input data, while the units chosen for the output displays are entirely up to the user.

A user-defined sensor is available which when selected can be set for battery voltage, soil temperature or wet bulb temperature sensors. Note that the sensor input units for the soil or wet bulb temperature sensors are always the same as the units set for the air temperature sensor.

The “Two Line Serial Input” checkbox is used to indicate that the serial input stream is formatted in two lines. That is, the input stream for one complete message consists of 80 characters of data, a carriage return-line feed pair, additional data characters, and a final carriage return-line feed pair.

Finally, the ‘Enable Sensor Polling’ check box is used when WeatherView Aviation is interfaced to a Campbell data logger operating in a polled fashion. If the ‘Enable Sensor Polling’ check box is selected, the Poll fields beside each sensor will un-gray, allowing the user to specify which data logger input location is associated with the sensor. Also, if the polling check box is selected, the Start and End data fields are automatically set to the correct configuration, and then grayed out. Once the polling check box is selected, the WeatherView Aviation application will immediately begin polling the Campbell Data logger at the rate specified in the ‘Sensor Update’ field in the System Settings menu. Note that WeatherView Aviation interprets and reformats the polled data response and displays the result in the current input data field similar to if the data was received in an un-polled mode.

Changes to the system configuration are recorded in the application “.ini” file when the application is exited allowing the last settings to be recalled and used when the application is started.

1.5.3.3 Serial Interface Settings

Toolbar: No

Presents the Sensor Serial Interface Settings dialog box (shown in Figure 1.5-10) that allows the user to specify the serial interface parameters.

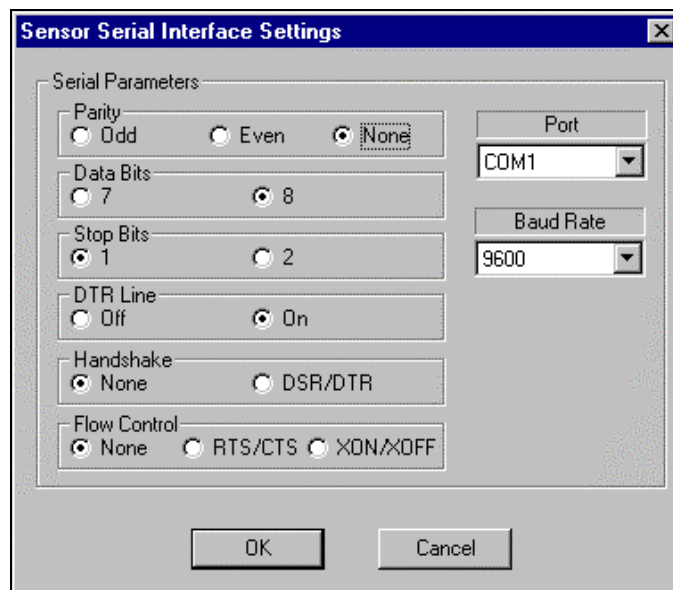


Figure 1.5-10 Sensor Serial Interface Settings Dialog

The Port pulldown, Baud rate pulldown and Parity, Data Bits and Stop Bits radio boxes are used to match the WeatherView Aviation serial port settings to the incoming sensor data stream parameters. Similarly the DTR Line, Handshake and Flow Control radio boxes are used for specialized applications which require specific DTR state, hardware handshaking or software flow control consideration.

Changes to the serial interface settings are recorded in the application “.ini” file when the application is exited allowing the last settings to be recalled when the application is started.

1.5.3.4 FTP Settings

Toolbar: No

Presents the FTP Settings dialog box (shown in Figure 1.5-11) that allows the user to specify the FTP interface parameters.

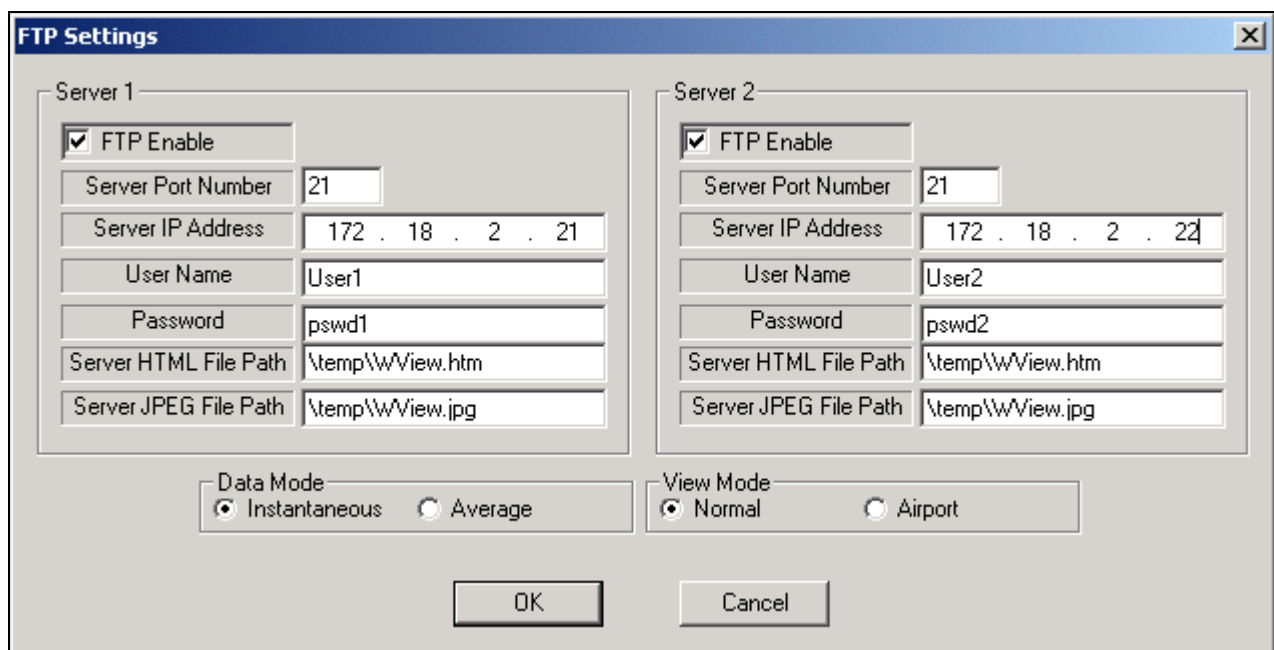


Figure 1.5-11 FTP Settings Dialog

For each of the two servers, the FTP Enable check boxes specify whether or not the FTP upload capability should be enabled for that server. If enabled, the user must fill in the Server Port Number, Server IP Address, User Name and Password boxes to specify the IP address and port of the FTP server and the user login information. The FTP server's system administrator should be able to supply these parameters. The HTML and JPEG File Path dialog boxes are used to specify which directory the two FTP files should be written to on the FTP server. The JPEG file is a raw copy of the specified view, while the HTML file is the file opened by the web browser to display the JPEG file.

The user can use the Data Mode and View Mode radio boxes to select which variation of the four views should be uploaded to the FTP server. If the user selects the 'Instantaneous' data mode, the data will be uploaded every five seconds. If the user specifies the 'Average data mode, the data will be uploaded at the end of the data averaging period. Note that the Data Mode and View Mode settings apply to both servers.

Changes to the FTP setup are recorded in the application “.ini” file when the application is exited allowing the last settings to be recalled when the application is started.

1.5.3.5 TCP/IP Settings ...

Toolbar: No

Presents the TCP/IP Settings dialog box (shown in Figure 1.5-12) that allows the user to specify the port of the WeatherView Aviation server (base station).

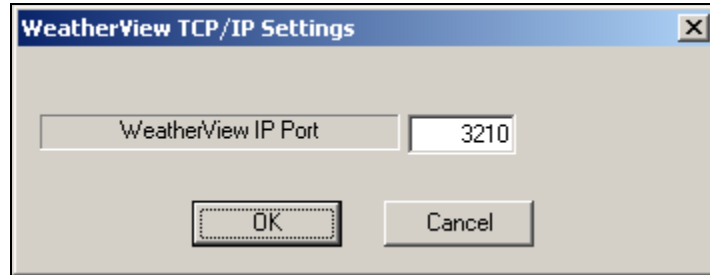


Figure 1.5-12 TCP/IP Settings Dialog

1.5.3.6 Colors

Toolbar: No

Presents a sub menu (shown in Figure 1.5-13) that allows the user to select which background color (either the Normal Display or the Airport Display) is to be modified.

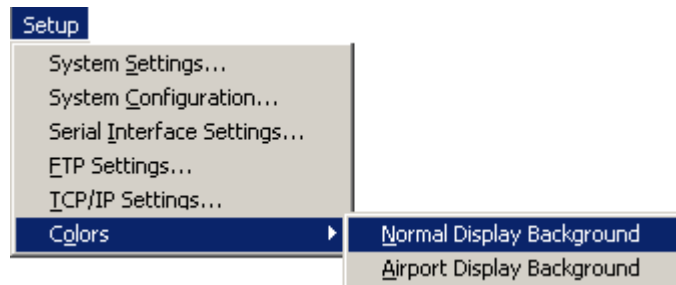


Figure 1.5-13 Background Selection Submenu

The standard Windows Color menu (shown in Figure 1.5-14) is then displayed to allow the use to select the background color.

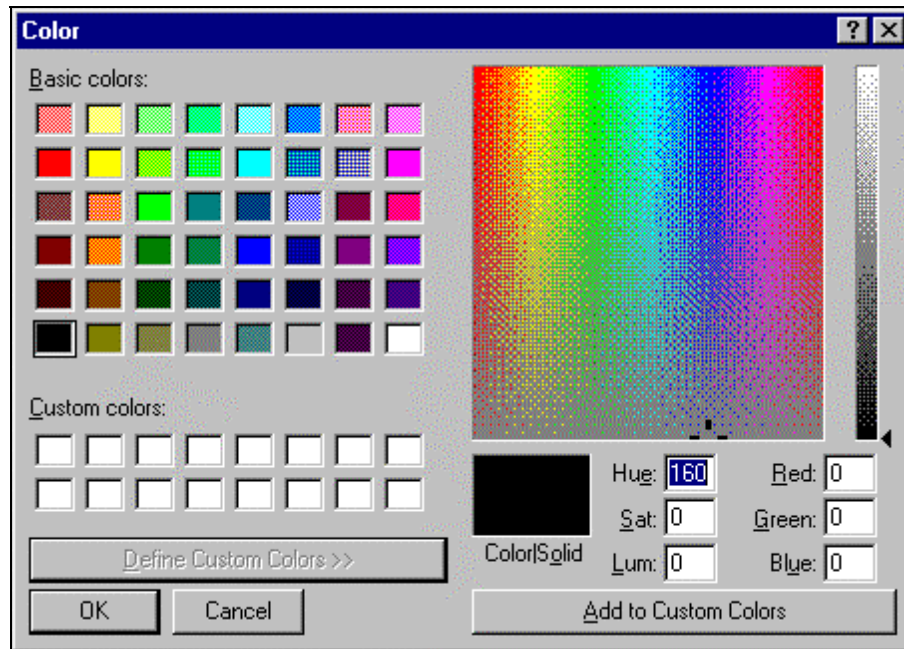


Figure 1.5-14 Color Selection Menu

The user can click on any of the Basic Colors presented, or specify a custom color using the extensive color creation capabilities. Any change to the background color is recorded in the application “.ini” file when the application is exited allowing the last settings to be recalled when the application is started.

1.5.4 Units

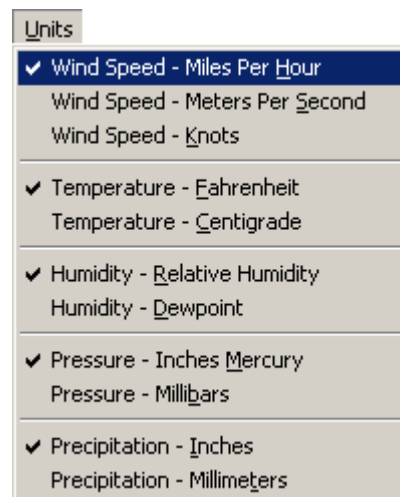


Figure 1.5-15 Units Menu

The Units Menu allows the user to modify the displayed units of measure (and log output units through a separate dialog) for all weather data. A check mark next to a unit indicates the current selected display units for that sensor type. The current units selection is saved in the application “.ini” file when the application is exited allowing the last settings to be recalled when the application is started.

1.5.4.1 Wind Speed – Miles Per Hour

Toolbar: 

Sets the units of measure for all wind speed indications to miles per hour.

1.5.4.2 Wind Speed – Meters Per Second

Toolbar: 

Sets the units of measure for all wind speed indications to meters per second.

1.5.4.3 Wind Speed – Knots

Toolbar: 

Sets the units of measure for all wind speed indications to knots.

1.5.4.4 Temperature – Fahrenheit

Toolbar: 

Sets the units of measure for the air temperature indication (and dew point, soil or wet bulb temperatures as applicable) to degrees Fahrenheit.

1.5.4.5 Temperature – Centigrade

Toolbar: 

Sets the units of measure for the air temperature indication (and dew point, soil or wet bulb temperatures as applicable) to degrees centigrade.

1.5.4.6 Humidity – Relative Humidity

Toolbar: 

Sets the humidity indication to show relative humidity in percent.

1.5.4.7 Humidity – Dewpoint

Toolbar: 

Sets the humidity indication to show the dewpoint in degrees Fahrenheit or centigrade depending on the temperature units selected.

1.5.4.8 Pressure – Inches Mercury

Toolbar: 

Sets the units of measure for the pressure or QNH indication to inches of mercury.

1.5.4.9 Pressure – Millibars

Toolbar: 

Sets the units of measure for the pressure or QNH indication to millibars.

1.5.4.10 Pressure – Baro. Pressure

Toolbar: None

Specifies that the barometric pressure should be displayed on the main screen.

1.5.4.11 Pressure – QNH

Toolbar: None

Specifies that QNH should be displayed on the main screen (in place of the barometric pressure).

1.5.4.12 Precipitation – Inches

Toolbar: 

Sets the units of measure for the precipitation indication to inches.

1.5.4.13 Precipitation – Millimeters

Toolbar: 

Sets the units of measure for the precipitation indication to millimeters.

1.5.5 Help



Figure 1.5-16 Help Menu

1.5.5.1 WeatherView Aviation Help...

Toolbar: 

Provides access to the WeatherView Aviation help database via an installed web browser.

1.5.5.2 About WeatherView Aviation ...

Toolbar: No

Displays a dialog box (shown in Figure 1.5-17) containing information about the WeatherView Aviation application such as the current version number.

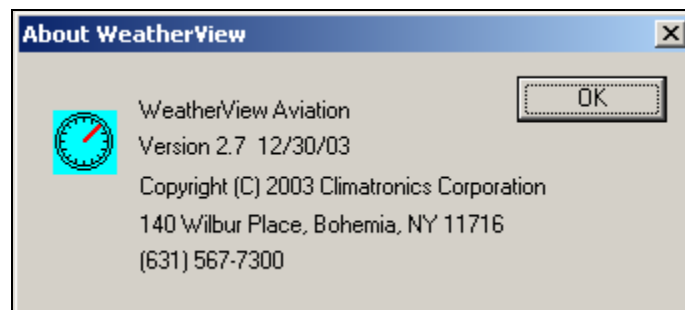


Figure 1.5-17 About WeatherView Aviation Dialog

1.6 Remote Workstation - Application View

The main application views while configured as a remote workstation (the instantaneous airport remote view is shown for example in Figure 1.6-1) are nearly identical to those when configured in base station mode, however remote mode capabilities are somewhat limited.

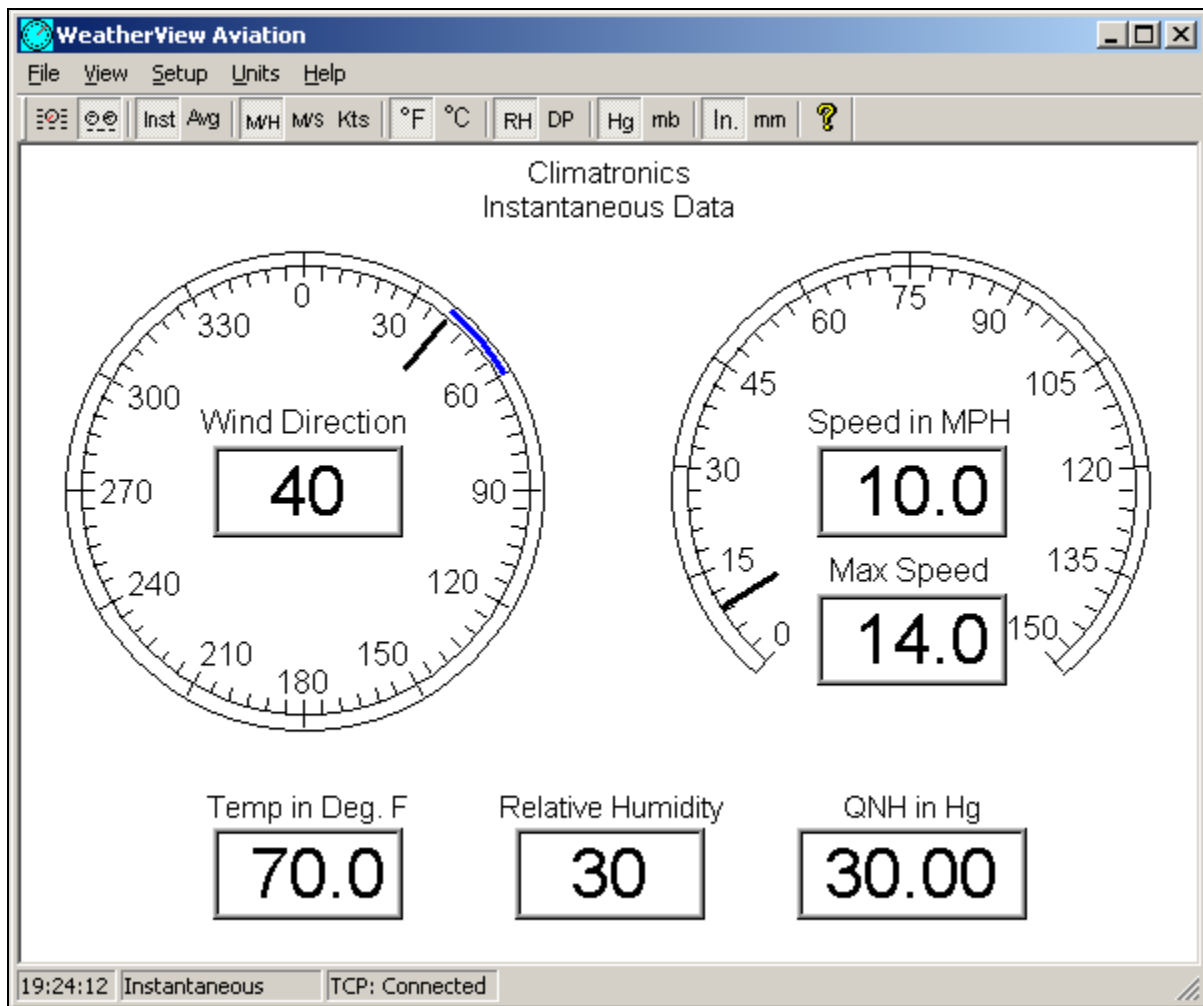


Figure 1.6-1 Remote Workstation Application View

When configured as a remote workstation, the user is prevented from viewing log data or configuring the log data units (data logging is only done at the base workstation), viewing the sensor input data stream, setting up the basic system settings or sensor configuration or setting up the FTP transfer settings (FTP upload is only done by the base workstation).

Additionally, the status bar at the bottom of the view shows only the system time, type of data currently displayed (either instantaneous or average) and the TCP/IP connection status (see Section 1.2). Otherwise, the form and function of the remote application views are identical to the base station view.

1.7 Remote Workstation - Application Menus

Operation of the WeatherView Aviation application in remote mode is a limited version of the operations available in base station mode. The following sections describe the functions performed by each menu and submenu item while in WeatherView Aviation remote mode.

1.7.1 Remote Workstation - File

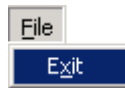


Figure 1.7-1 Remote Workstation - File Menu

1.7.1.1 Remote Workstation - Exit

Toolbar: No

Exits the application.

1.7.2 Remote Workstation - View

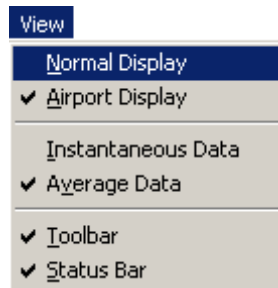


Figure 1.7-2 Remote Workstation - View Menu

1.7.2.1 Remote Workstation - Normal Display

Toolbar: 

The normal display view is opened. Refer to Section 1.4.1 for a complete description of this view.

1.7.2.2 Remote Workstation - Airport Display

Toolbar: 

The airport display view is opened. Refer to section 1.4.2 for a complete description of this view.

1.7.2.3 Remote Workstation - Instantaneous Data

Toolbar: 

The current data view (either airport or normal) is modified to show the instantaneous data values being received from the base station.

1.7.2.4 Remote Workstation - Average Data

Toolbar: 

The current data view (either airport or normal) is modified to show the average data values over the specified average interval.

1.7.2.5 Remote Workstation - Toolbar

Toolbar: No

The display of the main application toolbar is toggled on or off.

1.7.2.6 Remote Workstation - Status Bar

Toolbar: No

The display of the main application status bar is toggled on or off.

1.7.3 Remote Workstation - Setup

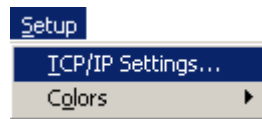


Figure 1.7-3 Remote Workstation - Setup Menu

1.7.3.1 Remote Workstation - TCP/IP Settings ...

Toolbar: No

Presents the TCP/IP Settings dialog box (shown in Figure 1.7-4) that allows the user to specify the IP Address and port of the WeatherView Aviation server (base station).

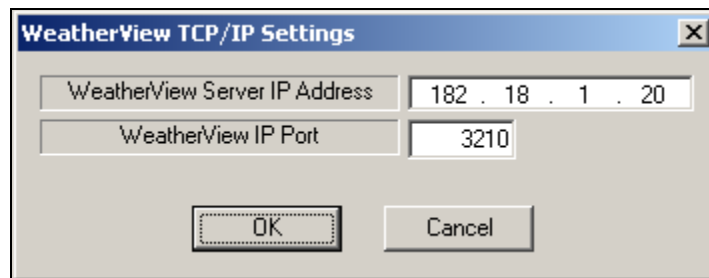


Figure 1.7-4 Remote Workstation - TCP/IP Settings Dialog

1.7.3.2 Remote Workstation - Colors

Toolbar: No

Presents a sub menu (shown in Figure 1.7-5) that allows the user to select which background color (either the Normal Display or the Airport Display) is to be modified.



Figure 1.7-5 Remote Workstation - Background Selection Submenu

The standard Windows Color menu (shown in Figure 1.7-6) is then displayed to allow the use to select the background color.

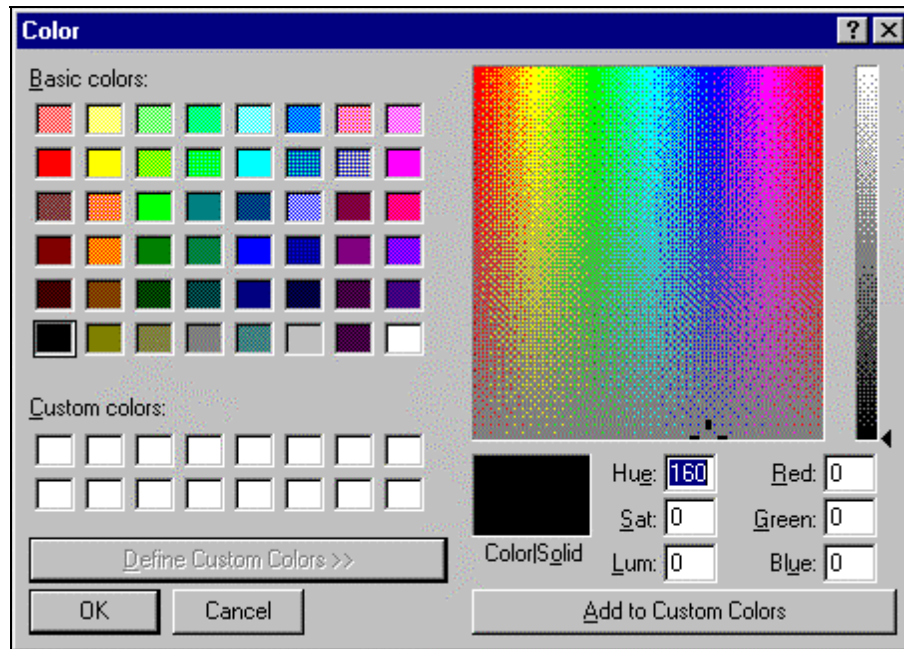


Figure 1.7-6 Remote Workstation - Color Selection Menu

The user can click on any of the Basic Colors presented, or specify a custom color using the extensive color creation capabilities. Any change to the background color is recorded in the application “.ini” file when the application is exited allowing the last settings to be recalled when the application is started.

1.7.4 Units

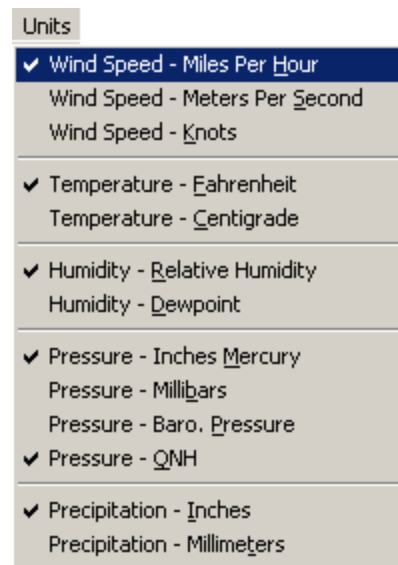


Figure 1.7-7 Remote Workstation - Units Menu

The Units Menu allows the user to modify the displayed units of measure for all weather data. A check mark next to a unit indicates the current selected display units for that sensor type. The current units selection is saved in the application “.ini” file when the application is exited allowing the last settings to be recalled when the application is started.

1.7.4.1 Remote Workstation - Wind Speed – Miles Per HourToolbar: 

Sets the units of measure for all wind speed indications to miles per hour.

1.7.4.2 Remote Workstation - Wind Speed – Meters Per SecondToolbar: 

Sets the units of measure for all wind speed indications to meters per second.

1.7.4.3 Remote Workstation - Wind Speed – KnotsToolbar: 

Sets the units of measure for all wind speed indications to knots.

1.7.4.4 Remote Workstation - Temperature – FahrenheitToolbar: 

Sets the units of measure for the air temperature indication (and dew point, soil or wet bulb temperatures as applicable) to degrees Fahrenheit.

1.7.4.5 Remote Workstation - Temperature – CentigradeToolbar: 

Sets the units of measure for the air temperature indication (and dew point, soil or wet bulb temperatures as applicable) to degrees centigrade.

1.7.4.6 Remote Workstation - Humidity – Relative HumidityToolbar: 

Sets the humidity indication to show relative humidity in percent.

1.7.4.7 Remote Workstation - Humidity – DewpointToolbar: 

Sets the humidity indication to show the dewpoint in degrees Fahrenheit or centigrade depending on the temperature units selected.

1.7.4.8 Remote Workstation - Pressure – Inches MercuryToolbar: 

Sets the units of measure for the pressure or QNH indication to inches of mercury.

1.7.4.9 Remote Workstation - Pressure – MillibarsToolbar: 

Sets the units of measure for the pressure or QNH indication to millibars.

1.7.4.10 Remote Workstation - Pressure – Baro. Pressure

Toolbar: None

Specifies that the barometric pressure should be displayed on the main screen.

1.7.4.11 Remote Workstation - Pressure – QNH

Toolbar: None

Specifies that QNH should be displayed on the main screen (in place of the barometric pressure).

1.7.4.12 Remote Workstation - Precipitation – Inches

Toolbar: 

Sets the units of measure for the precipitation indication to inches.

1.7.4.13 Remote Workstation - Precipitation – Millimeters

Toolbar: 

Sets the units of measure for the precipitation indication to millimeters.

1.7.5 Remote Workstation - Help

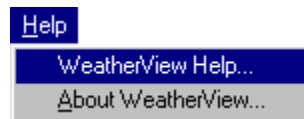


Figure 1.7-8 Remote Workstation - Help Menu

1.7.5.1 Remote Workstation - WeatherView Aviation Help...

Toolbar: 

Provides access to the WeatherView Aviation help database via an installed web browser.

1.7.5.2 Remote Workstation - About WeatherView Aviation ...

Toolbar: No

Displays a dialog box (shown in Figure 1.7-9) containing information about the WeatherView Aviation remote application such as the current version number.

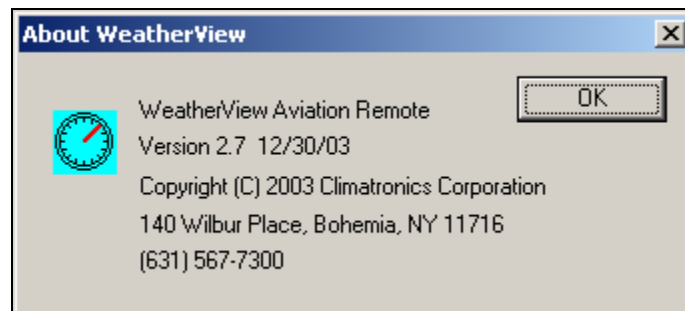


Figure 1.7-9 Remote Workstation - About WeatherView Aviation Remote Dialog