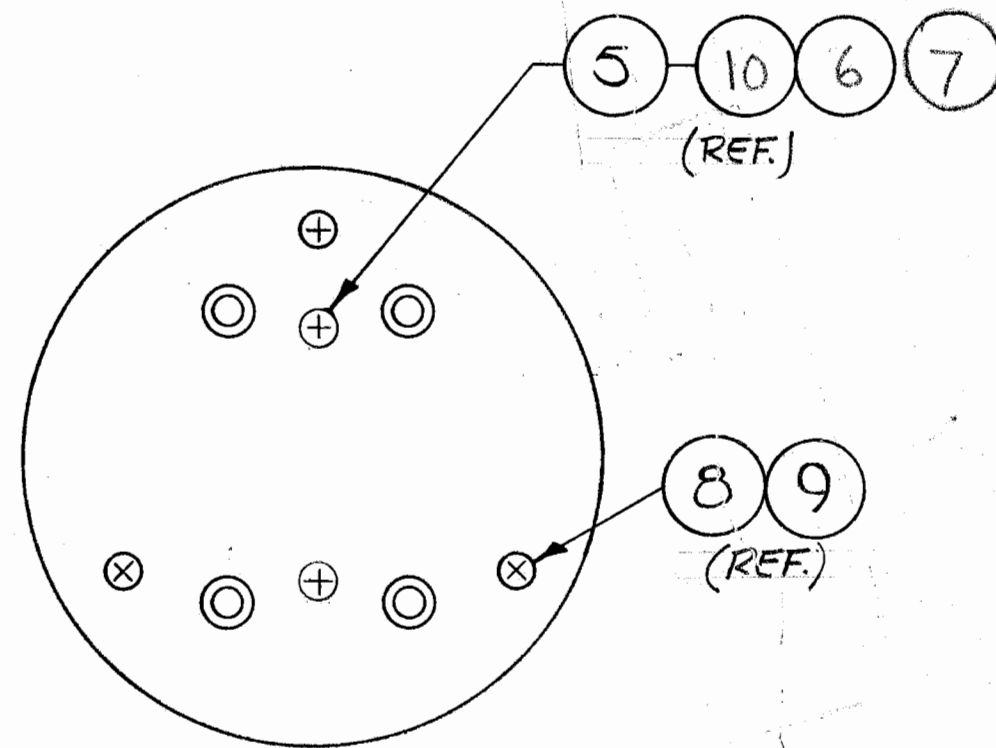


APPLY ANTI-SEIZE
LUBRICANT TO ONLY
THESE TWO SCREWS.



TOP VIEW

REVISIONS		
F	5601	9/26/06 DA

NEXT ASSY
101069

TOLERANCES (EXCEPT AS NOTED)	REVISIONS		CLIMATRONICS CORP.		
	NO.	DESCRIPT	BY		
DECIMAL	A	1463	KE	SOLAR RAD. SENSOR MOUNT	
±	B	2158 ^{b)}	10/20/80		
FRACTIONAL	C	ECN 2930	12-16-80 SF.	DRAWN BY KE	SCALE 1/2
±	D	ECN 4156	10-16-91 S.F.	CHK'D	DATE 12/12/80
ANGULAR	E	ECN 4801	3-17-98 RVN	TRACED	APP'D [Signature]
±					MATERIAL SEE P/L
					DRAWING NO. 101096
					REV. F

RADIATION SENSOR MOUNT
P/N 101096 Rev F
PARTS LIST
Sheet 2 of 2

ITEM	SYM.NO	QTY	PART NO.	DESCRIPTION
1		1.0	500632	PIPE, MOUNTING
2		1.0	500531	RADIOMETER MTG PLATE DETL
3		1.0	47-3/4	SPEED RAIL
4		1.0	10-1X3/4	CROSS, 1 IN X 3/4 IN
5		2.0	MS51960-83	SCREW 1/4-28 x 5/8 FH
6		2.0	MS35338-139	WASHER LOCK SPLIT 1/4
7		2.0	MS35650-3254	NUT HEX 1/4-28
8		0.0	101096G	SEE G LIST
9		3.0	MS35338-138	WASHER LOCK SPLIT #10
10		2.0	MS15795-810	WASHER FLAT 1/4

SEE G LIST
P/N 101096G Rev
PARTS LIST
Sheet 1 of 1

ITEM	SYM.NO	QTY	PART NO.	DESCRIPTION
		1.0	101096G0	100553,100848,101655 SENSORS
		1.0	101096G1	102318, 102725 SENSORS
		1.0	101096G2	102319 SENSOR

100553,100848,101655 SENSORS

P/N 10109600 Rev

PARTS LIST

Sheet 1 of 1

ITEM	SYN. NO	QTY	PART NO.	DESCRIPTION
8		3.0	MS51958-67	SCREW 10-32 x 1 PH

102318, 102725 SENSORS
P/N 101096G1 Rev
PARTS LIST
Sheet 1

ITEM	SYM. NO	QTY	PART NO.	DESCRIPTION
8		2.0	MS51958-69	SCREW 10-32 x 1 1/2 PH

102319 SENSOR
P/N 101096G2 Rev
PARTS LIST
Sheet 1 of 1

ITEM	SYM.NO	QTY	PART NO.	DESCRIPTION
A		2.0	10F300MXPS	SCREW, PAN HEAD 10-32 X 3 INCH