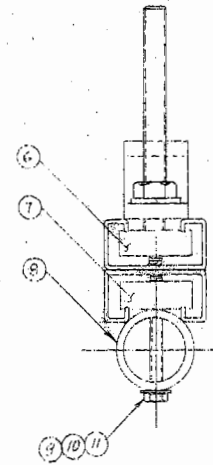
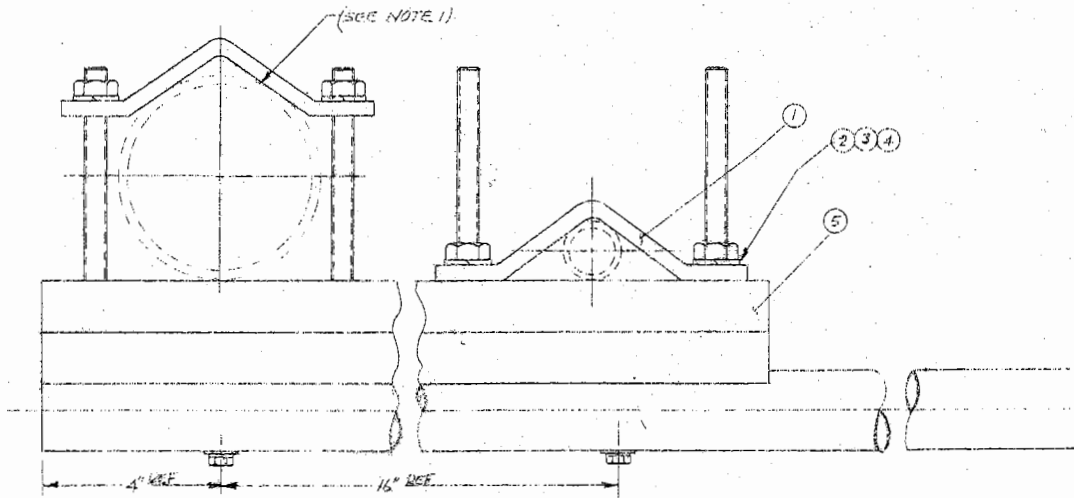


REVISIONS				
ZONE	REV	DESCRIPTION	DATE	APPROVED
	A	LOCAL TAIL		
	B	LOCAL TAIL		



NOTE.

1) BRACKET ADJUSTS BETWEEN ANY GIVEN PIPE DIA. (1/4 MIN. TO 3" MAX.)

QTY	FROM	PART OR	DESCRIPTION	MATERIAL
REQD.	NO.	PART NO.	OF DESCRIPTION	DESCRIPTION
UNLESS OTHERWISE SPECIFIED DIMENSIONS ARE IN INCHES FRACTIONS DECIMALS ANGLES				
		CONTRACT NO.		CLIMATECHRONICS
		APPROVALS		
		MATERIAL		TOWER BODY ASSY
		SEE PART LIST		
		FINISH		SHEET FROM NO. D 52332 DWG. NO. 101069
		NEXT ASBY		
		USED ON		SCALE AS SHOWN
		APPLICATION		
		DO NOT SCALE DRAWING		SHEET 7 OF 10

TOWER BOOM
P/N 101069 Rev B
PARTS LIST
Sheet 2 of 2

ITEM	SYM.NO	QTY	PART NO.	DESCRIPTION
1		2.0	500792	BRACKET, CLAMP
2		4.0	MS35338-141	WASHER LOCK SPLIT 3/8
3		4.0	MS51971-3	NUT HEX 3/8-16
4		4.0	3/8-16X4	ROD, THREADED 3/8-16 X 4 IN SS
5		1.0	500794-1	24 INCH UNISTRUT
6		4.0	P4008	UNISTRUT NUT 3/8-16
7		2.0	P4006-1420	UNISTRUT NUT 1/4-20
8		1.0	500958	PIPE, BOOM
9		2.0	MS15795-810	WASHER FLAT 1/4
10		2.0	MS35338-139	WASHER LOCK SPLIT 1/4
11		2.0	MS35307-312	BOLT 1/4-20 x 1 1/2